



1X4 LED FLAT PANEL LIGHT

Description:

Introducing the Square Slim Flat Panel Light, a versatile lighting solution for commercial spaces. Available in 1X4, 2X2, and 2X4 sizes, it seamlessly integrates with T-bar ceiling tiles and offers a surface mount kit for various ceiling structures. With 3 watts tunable and CCT changeable features, it caters to different applications, providing customizable lighting. Easy installation adds to its appeal, making it an efficient choice for modern commercial environments. Elevate your space with the Square Slim Flat Panel Light – a stylish, adaptable, and energy-efficient lighting solution.

Model : PLLS3511143CJL

Optical:

Lumen Output: 125 LM/W
 Lumens: 3125-3750-4375LM
 LED Type: SMD 2835
 CRI: ≥80

Electrical:

Rated Power: 25W / 30W /35W
 CCT Tunable Series: 3500K /4000K / 5000K
 Input voltage: 120-347V
 Power factor: >0.9

Life:

Lumen maintenance: 50,000h
 Warranty: 2 Years

General:

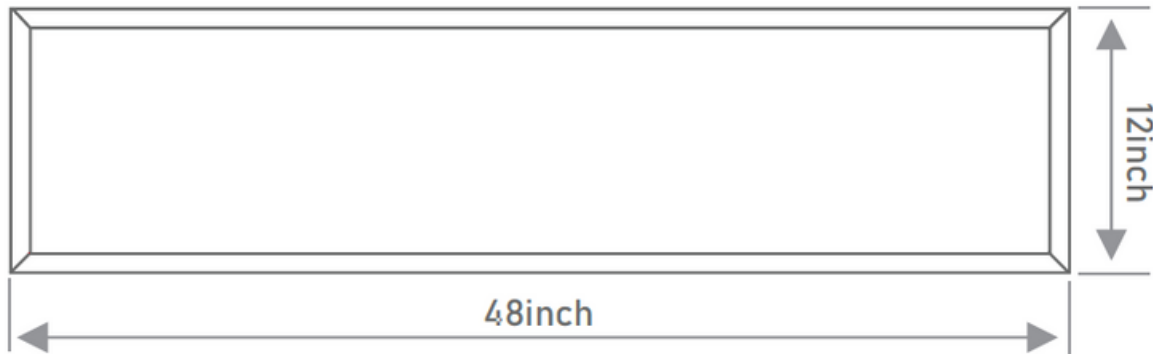
Dimmable: 0-10V
 IP: IP40
 Operating temperature: -20°C to+50°C
 Finish color Availability: White
 Certification: ETL, FCC, DLC

Model No.	Size (inch)	Input Voltage	Watts (W)	CCT (K)	Lpw (Lm/w)	Lumens(Lm)
PLB-XXW14-28CDD[L,M]-01	12*48	AC120-277V	25	3500	125	3125
		or	30	4000	125	3750
		AC120-347V	35	5000	125	4375



1X4 LED FLAT PANEL LIGHT

DIMENSIONS:





1X4 LED FLAT PANEL LIGHT

Power& CCT Tunable Series

Power Tunable



CCT Tunable

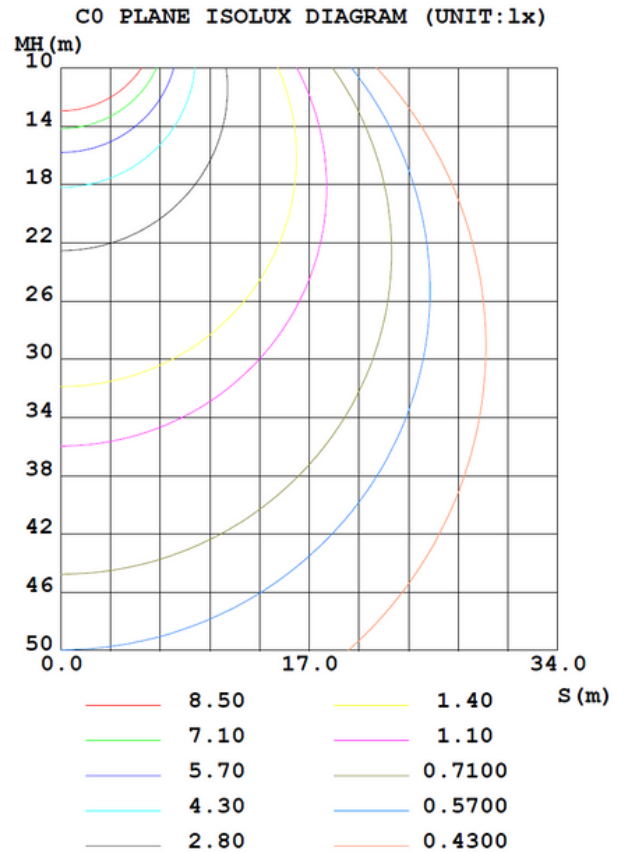
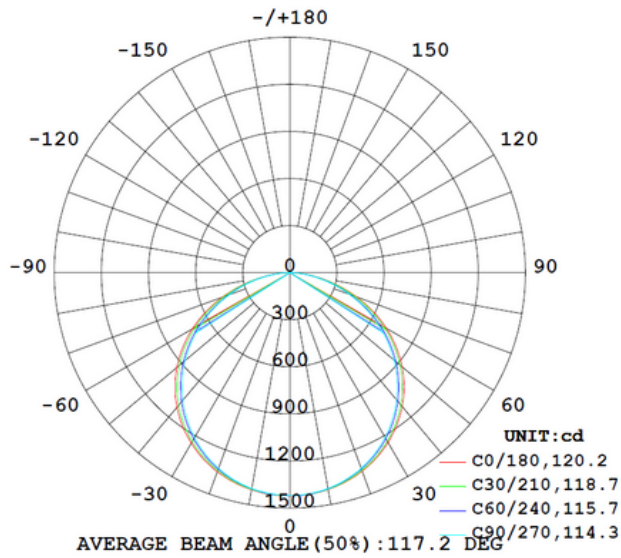




1X4 LED FLAT PANEL LIGHT

PHOTOMETRIC

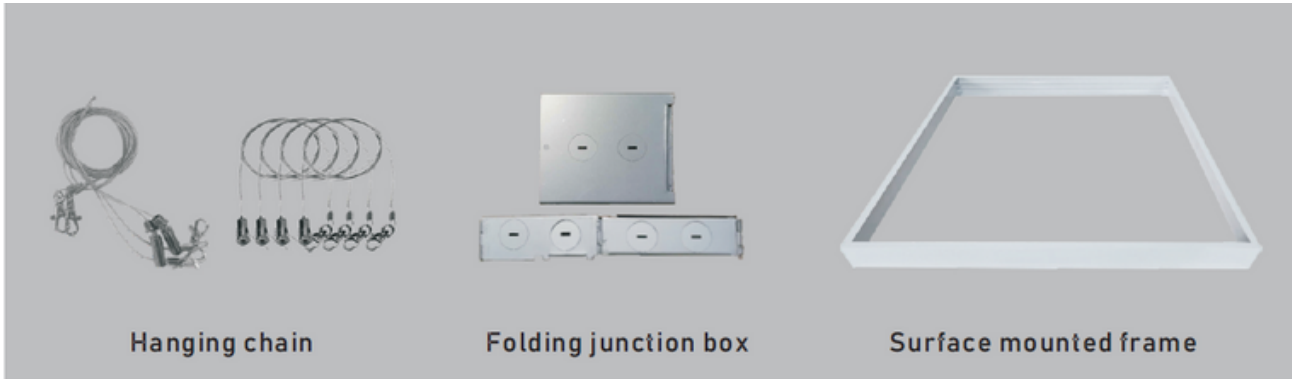
LUMINOUS INTENSITY DISTRIBUTION DIAGRAM





1X4 LED SLIM PANEL LIGHT

ACCESSORIES (Optional)



PROUDUCT ADVANTAGES

