



Allo 2" / 4"

Description:

The Allo Series offers modern, versatile recessed lighting available in both 4" and 2" sizes with a choice of round or square trims in black or white finishes. Designed with performance and aesthetics in mind, these fixtures are IC-rated and suitable for dry and damp locations, ensuring flexibility across residential and commercial applications.

A regressed lens reduces glare and lowers UGR, providing comfortable and visually pleasing illumination. The fixtures feature 5 selectable CCT options for on-site flexibility and operate on 120VAC input with TRIAC dimming for smooth, flicker-free control.



Model: DNLSXX11X5CCXXGF

Optical:

CCT:	5CCT Tunable, 27K/30K/35K/40K/50K
Lumen out put::	1000-1100
LED :	COB
CRI:	>90Ra



Electrical:

Rated Power:	9W / 12W / 15W
Input voltage:	100-130V AC, 50/60HZ
Beam angle:	24° / 36°

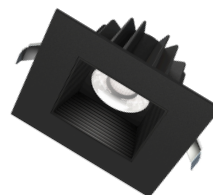
Life:

Lifespan:	30,000hrs
Warranty:	2 Years



General:

Dimmable Solution:	Triac dimming 5-100%
Power Factor:	>0.9
Type:	IC , Airtight
Body:	Die cast aluminum alloy for optimal heat dissipation
Certification:	cETLus



**Allo 2" / 4"****PRODUCT TYPES**

Size&Shape	Input Power	Lumen	Halogen Equivalent
2" Round	9 W	600-700	60W
2" Square	9 W	600-650	60W
4" Round	12 W	1000-1100	90W
4" Round	15 W	1200-400	90W
4" Square	12 W	1000-150	90W
4" Square	15 W	1200-1350	90W

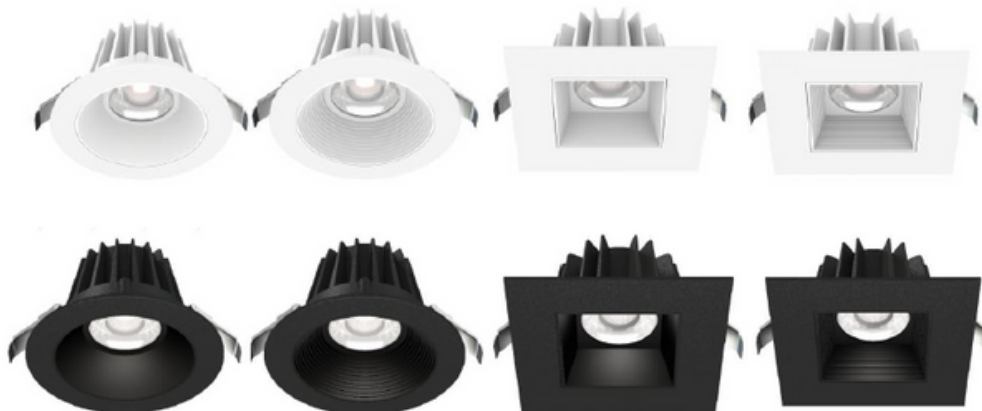
Family series	Shape	Reflector	Color	Size	Wattage	CCT
DNL	S: Square	B: Baffle	W: White	04:4"	09:9W	5C:5CCT
	R: Round	S: Smooth	B: Black	02:2"	12:12W	



Allo 2" / 4"

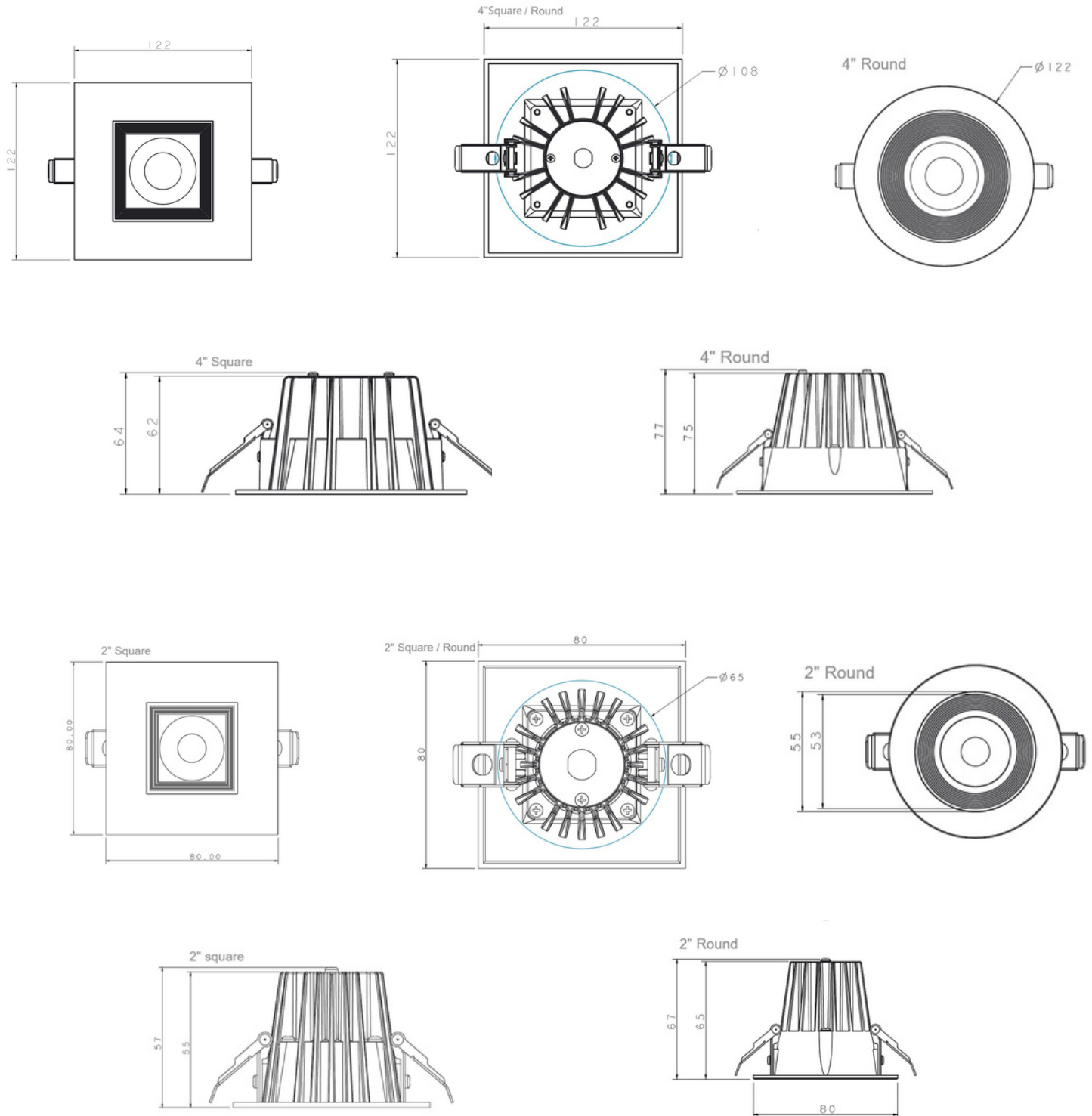
PROUDUCT SIZE

Size&Shape	Dimension	Cutout Size
2" Round	Φ80*67mm	Φ70mm
2" Square	Φ80*67mm	Φ70mm
4" Round	Φ122*67mm	Φ102-108mm
4" Square	Φ122*77mm	Φ102-108mm





Allo 2" / 4"





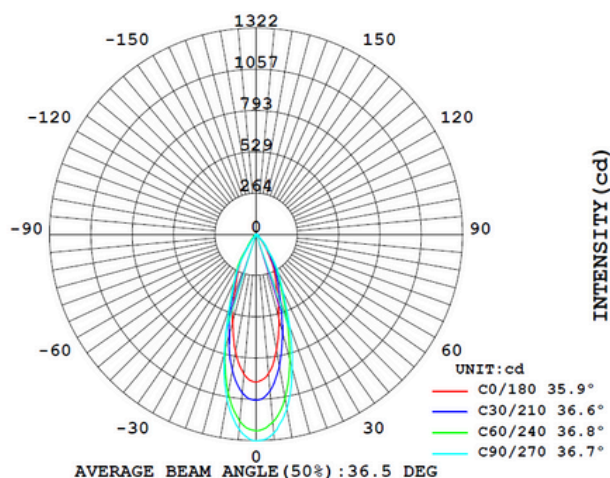
Allo 2" / 4"



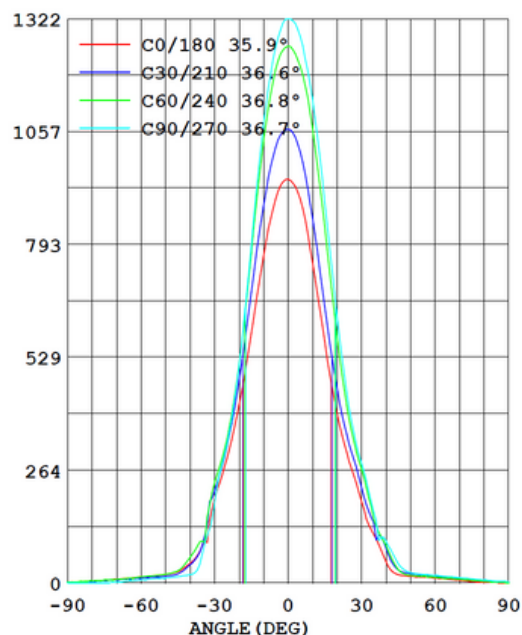
Photometric Test report

Allo 2" 9W 3000K

LUMINOUS INTENSITY DISTRIBUTION

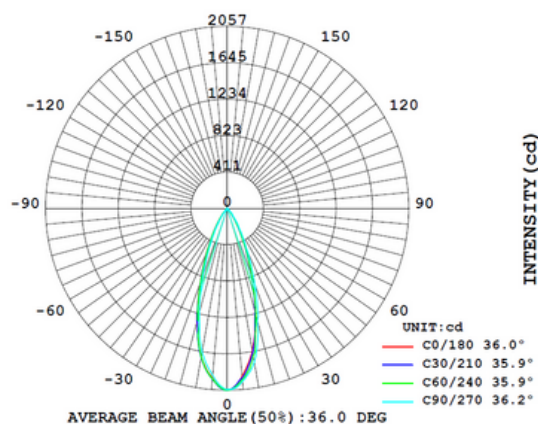


LUMINOUS INTENSITY DISTRIBUTION



Allo 4" 12W 3000K

LUMINOUS INTENSITY DISTRIBUTION



LUMINOUS INTENSITY DISTRIBUTION

