

**LED LINEAR STRIP LIGHT G2****Description:**

Introducing a versatile lighting solution for effortless installation and customization. This second-generation design, with a neater look and slimmer size, features an integrated LED system with a snap-lock diffuser lens, ensuring secure and hassle-free assembly. Tailor brightness and tone with adjustable power and color temperature (CCT) to meet specific needs. Options available for this fixture include a microwave motion sensor and battery backup for added versatility.

Model: LRL4011043CG2TO**Optical:**

Lumen Efficacy:	130 LM/W
LED Type:	SMD
CRI:	≥80

Electrical:

Input voltage:	120-347V / 50/60HZ
Power	28/32/40 watt tunable
Beam angle:	110° Dir Light Only
Power factor:	> 0.9

Life:

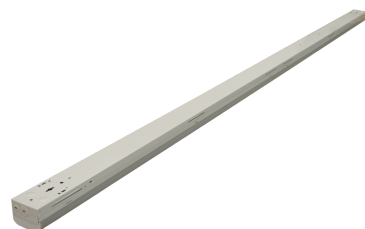
Lumen maintenance:	50,000h
Warranty:	2 Years

General:

Operating temperature:	20 to 45°C
Finish color Availability:	White
Certification:	UL, CUL, FCC, DLC

Specification:

- UL Listing:
- Suitable for damp locations
- LEDs:
- Long-life, high-efficiency, micro-power LEDs
- Lifespan:
- Lumen Maintenance, L70 > 100,000 hours
- Dimming Driver:
- Driver includes dimming control wiring for 0-10V dimming systems. The dim-to-off voltage threshold of optional 12V AUX integrated driver ranges from 0.1V to 0.5V.
- Housing:
- Sheet metal stamping




LED LINEAR STRIP LIGHT G2

2FT	20W								
	3500K	4000K	5000K						
Lumens	2600	2620	2640						
Efficacy (lm/W)	130	131	132						
3FT	25W								
	3500K	4000K	5000K						
Lumens	3250	3275	3300						
Efficacy (lm/W)	130	131	132						
4FT	30W			35W			45W		
	3500K	4000K	5000K	3500K	4000K	5000K	3500K	4000K	5000K
Lumens	3900	3930	3960	4550	4585	4620	5850	5895	5940
Efficacy (lm/W)	130	131	132	130	131	132	130	131	132
8FT	65W			75W			90W		
	3500K	4000K	5000K	3500K	4000K	5000K	3500K	4000K	5000K
Lumens	8450	8515	8580	9750	9825	9900	11700	11790	11880
Efficacy (lm/W)	130	131	132	130	131	132	130	131	132



LRL/XX/AA/BB/CCC/DD/EE/FF

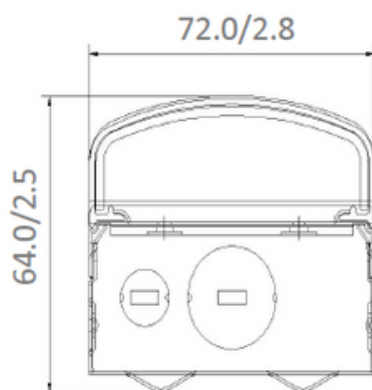
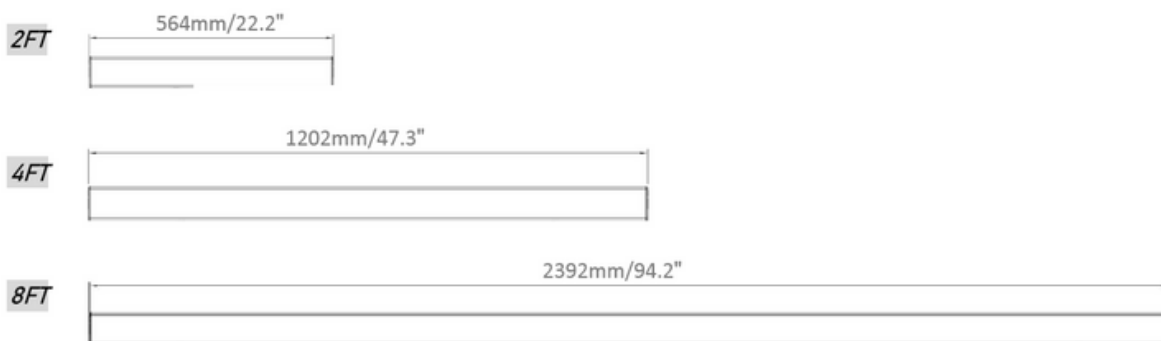
- LRL: LED Linear Light.
- XX: Refer to initial available power
- AA: refer to voltage range, can be any number or blank, 277= 120-277V; 347 = 120-347V but recognize by11
- BB: Refer to product length, which can be 2FT=2FT , 4FT=4FT , 8FT=8FT.
- CCC: refer to color option could 1cc 3cc 5cc.
- DD: Refer to Generation 1, 2, ...
- EE: refer to equipped options. for sensor S, for battery B and blank for no option.
- FF: Recognition by manufacturer



LED LINEAR STRIP LIGHT G2

DIMANSION:

Length:



PRODUCT WEIGHT(Kg/lb.)

Product series	2FT	3FT	4FT	8FT
STR2-W	1.20/2.65	1.60/3.53	2.00/4.41	3.85/8.49

