

## SDD-CCT series

**Whole Family: SDD-xx096-CCT    24V / 48V - 96W**



**Class P SELV**

**RoHS**



**The driver is inside**

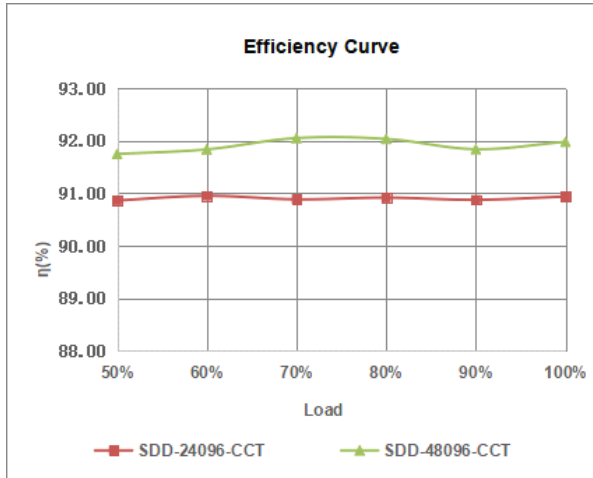
## Features

Output:	Constant Voltage
Input Range:	120VAC
PFC design:	Built-in active PFC function
Protections:	Short circuit/ Over load/ Over temperature
Heat dissipation:	Cooling by free air convection
Waterproof performance:	For dry and damp locations (US)
Design features:	<ol style="list-style-type: none"><li>1) Fine-tune output voltage can be adjusted slightly</li><li>2) Preset dimmer with on/off switch</li><li>3) 3-Way switches</li><li>4) Dimming and color temperature adjustment function.</li><li>5) Eliminated compatibility issues between drivers and switches</li></ol>
Dimming range:	0.3%-100%
Application:	Suitable for the application of LED lighting
Warranty:	5 years warranty
Others:	20KHZ PWM output with dimming curve is a gamma 2.2 curve      Flicker-free

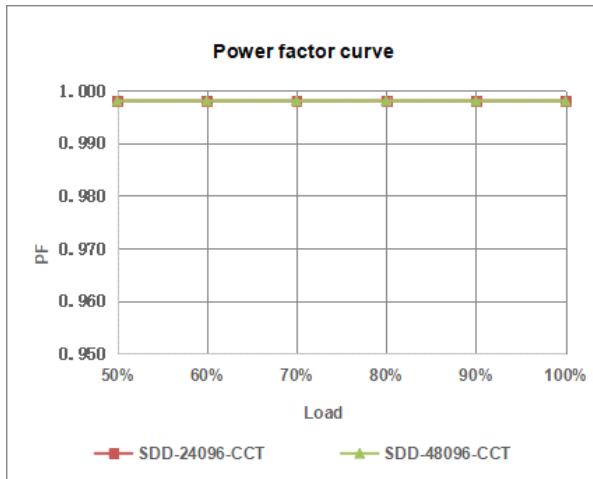
## Specification

Model		SDD-24096-CCT	SDD-48096-CCT
Certificate		UL / cUL / FCC / Class P / SELV / RoHS / Reach	
Output	DC Rate Voltage	24V    (24V-26V adjust by knob)	48V    (48V-50V adjust by knob)
	Voltage Tolerance	±0.5V	
	Load Regulation	≤1%	≤1%
	Line Regulation	≤0.5%	
	Rated current	4A	2A
	Rated power	96W	96W
Input	Voltage Range	120VAC	
	Frequency Range	47 - 63Hz	
	Power Factor @ full load	≥0.99	
	THD(Typ.) @ full load	≤10%	
	Efficiency @ full load	91.0%	92.0%
	AC Current (Max.)	0.9A	0.9A
	Inrush Current (Typ.)	50A, 150us@50% Ipeak	
	Leakage current	<0.5mA	
Protection	Short Circuit	Hiccup mode, recovers automatically after fault condition is removed	
	Over Load	≥110% Hiccup mode, recovers automatically after fault condition is removed	
	Over temperature	Shell surface temperature 100℃±10℃ shut down o/p voltage, automatically recover after cooling	
Environment	Working TEMP.	-40~+50℃ (see below derating curve)	
	Working Humidity	20 - 95%RH    non-condensing	
	Storage TEM.,Humidity	-40 - +80℃,10 - 95% RH non-condensing	
	TEMP.coefficient	±0.03%/℃(0 - 50℃)	
	Vibration	10~500Hz, 2G 12min./1 cycle, period for 72 min. each along X,Y,Z axes	
Safety & EMC	Safety standards	UL8750    CAN/CSA-C22.2 No.250.13 (US)	
	Withstand voltage	I/P-O/P:1.8KVAC    I/P-F/G:1.8KVAC    O/P-F/G:0.5KVAC (US)	
	Isolation resistance	I/P-O/P:100M Ω / 500VDC / 25℃ / 70% RH	
	EMC Immunity	FCC/ICES do not request this test (US)	
	EMC Emission	FCC Part15 Subpart B    ANSI C63.4:2014 (US)	
Others	Net Weight	0.25KG	
	Dimension	105*54*51mm /    4.134"x2.126"x1.996" (Inch)	
	Packing		
Notes	1.    All parameters NOT specially mentioned are measured at 120VAC input, rated load and 25℃ of ambient temperature. 2.    Tolerance: includes set up tolerance and load regulation .		

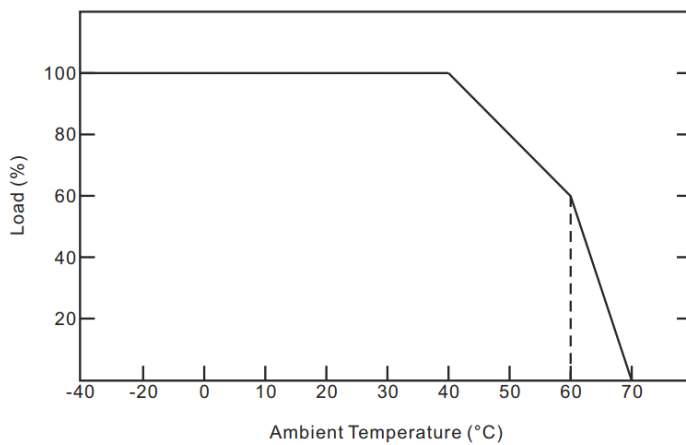
## Efficiency Curve (efficiency vs output load)



## Power factor curve

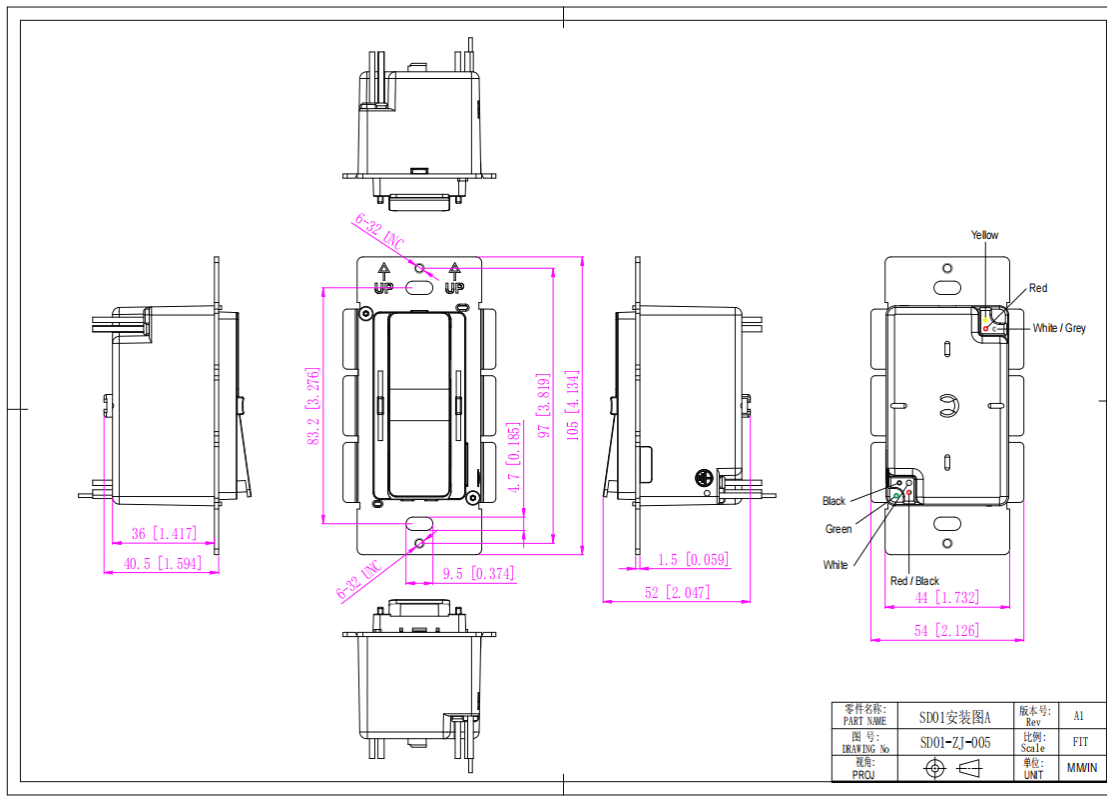


## Derating Curve (Output power VS Ambient TEMP)



- To extend their life, please refer to the Derating Curve and derate according to the temperature.
- The output current of the LED driver should be selected according to the rated current of the lamp and the ambient temperature. Normally, we recommend the power supply to reserve a certain amount of load to extend LED driver's life.

## Mechanical Specification



### American Wire Gauge

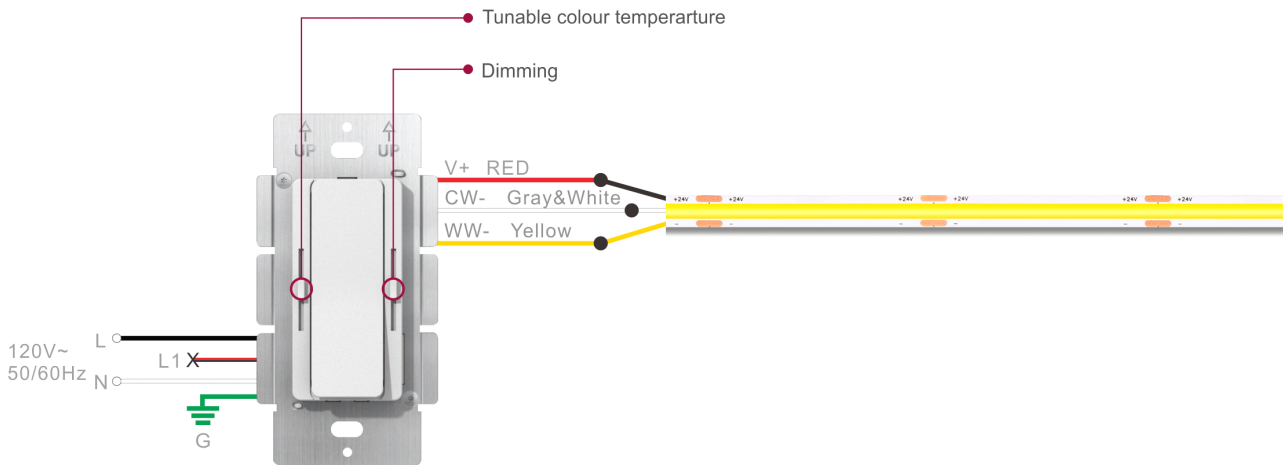
SD01	
Input wires	Black cable (L), Red black cable (L1) , White cable (N) and Green cable (FG) (4*18AWG)
Output wires	Red cable (V+) ,White gray cable(CW-),Yellow cable(WW-) (3*18AWG)

### Warm tips :

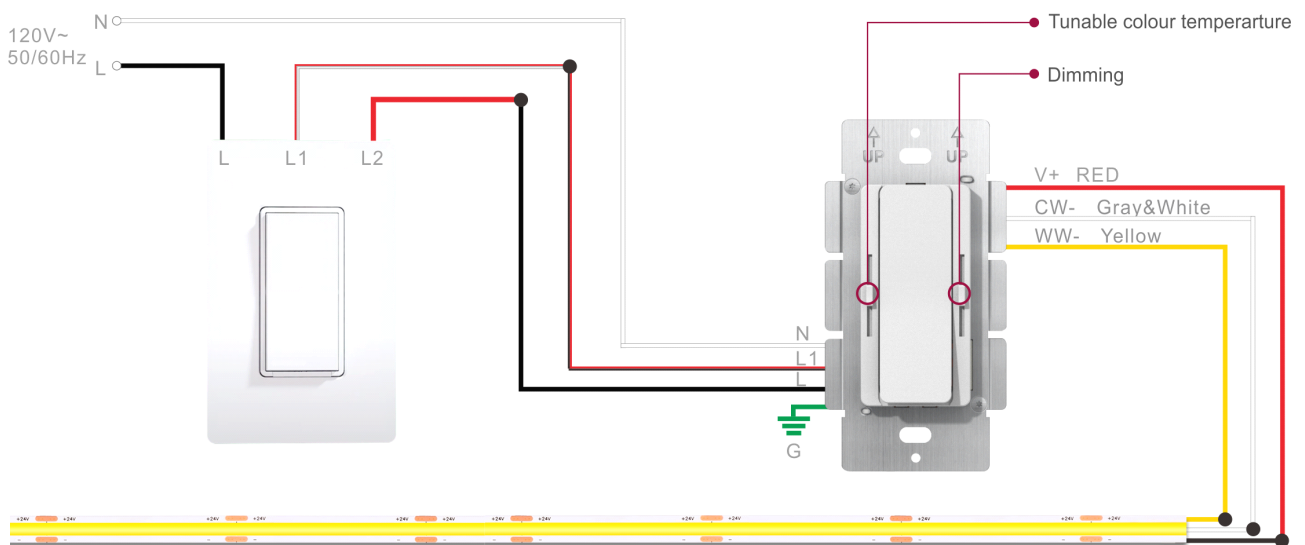
- Any other requests, we can customize.
- Please ensure that the connection is correct.

### Dimming Operation and Connecting Diagram

#### ① Wiring diagram of SDD-CCT model for standard dimming system

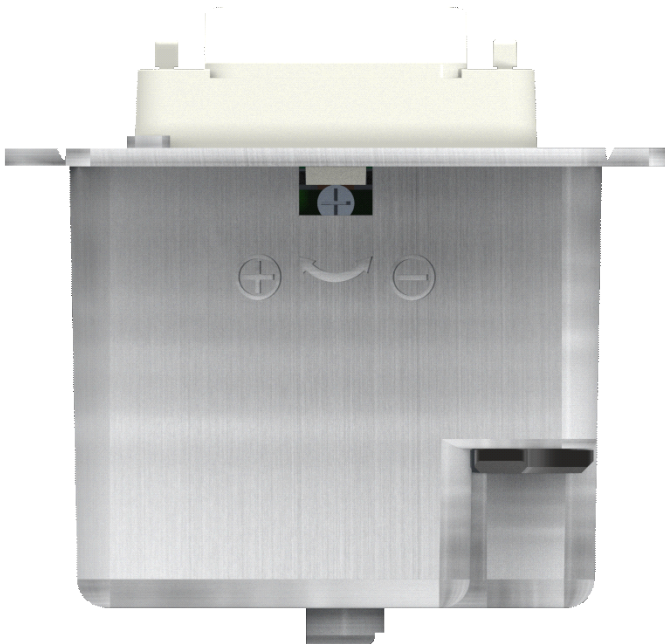


#### ② Wiring diagram of SDD-CCT model for 3-way dimming system



## Knob to adjust the voltage

Clockwise rotation of the high voltage



## Instructions

1. This driver+dimmer 2 in 1 should be installed by qualified and professional person.
2. Please make sure the driver+dimmer 2 in 1 is installed with adequate ventilation around it to allow for heat dissipation.
3. Ensure that connection is correct to avoid LED light or driver+dimmer 2 in 1 be damaged.
4. If the driver+dimmer 2 in 1 cannot work normally, don't maintain privately.