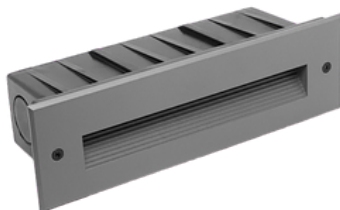




### LuminaCast Baffle



#### Description:

The concrete pour step/wall light offers a sleek and contemporary lighting solution for concrete structures, retaining walls, steps, and stairs. With its low trim profile, it blends seamlessly with the surrounding surfaces. This fixture is highly popular due to its decent power and lumens output. Its easy installation and low maintenance make it a practical choice. The concrete pour step/wall light enhances the ambiance and safety of outdoor spaces effortlessly, adding a stylish touch to any environment.

**Model: SP15170524003KDGKP**

#### Optical:

CCT:	3000
Light Source:	15 X SMD 5630
Luminance:	CW=99 WW=92
CRI:	>80

#### Electrical:

Rated Power:	4.8W
Input voltage:	24V DC
LED Driver:	Constant Voltage Input, Constant Current Output

#### Life:

Lumen maintenance:	50,000 Hrs
Warranty:	5 Years

#### General:

Dimmable Support:	Triac PWM 1-10V Dali
IP:	65
IK:	10
Operating temperature:	-20°C~40°C
Finish color Availability:	Die-casting grey powder coated aluminum
Certification:	cETLus

TRIAC

PWM

1-10V

DALI

IP65  
OUTDOOR  
RATED



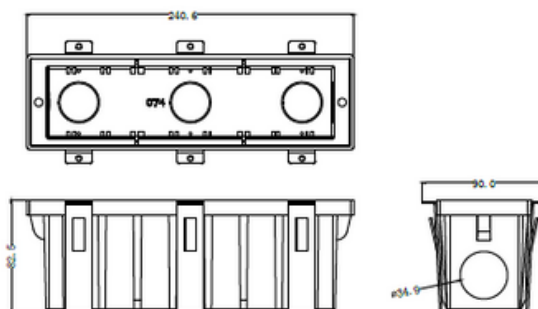
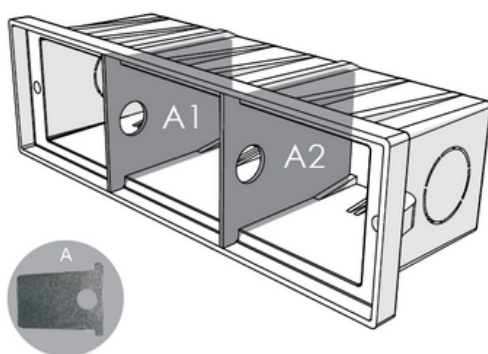
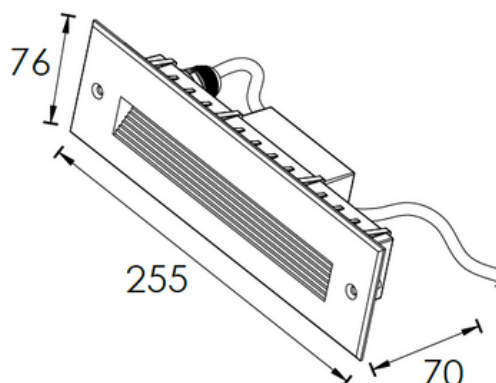
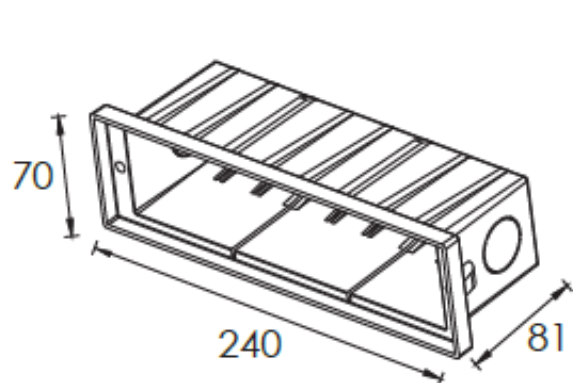
OSRAM





## LuminaCast Baffle

### PRODUCT SIZE





## LuminaCast Baffle

---

### Mounting sleeve characteristic



.The above picture-the support plate "A" and "B" are used for preventing deformation of the sleeve during the construction installation process.

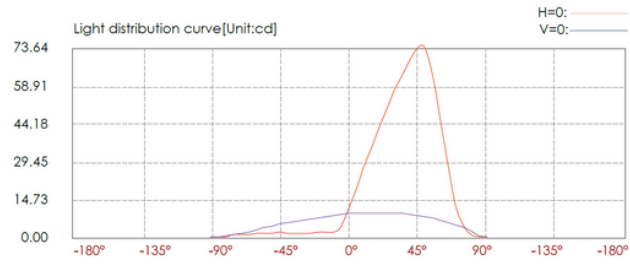
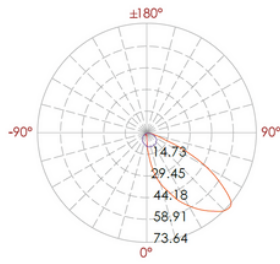
Please remove the supporting plate "A" and "B" from the mounting sleeve before the lamp installation





## LuminaCast Baffle

### PHOTOMETRIC



Lux distance curve			
Center beam LUX	Illuminance at a distance		Beam width V H
	Center beam LUX	Beam width V H	
2m	3.28 LUX	4.30m 1.70m	
4m	0.82 LUX	8.60m 3.40m	
6m	0.36 LUX	12.9m 5.10m	
8m	0.20 LUX	17.2m 6.90m	
10m	0.13 LUX	21.4m 8.60m	
12m	0.09 LUX	25.7m 10.3m	
Ver.Spread:94.1		Horiz.Spread:46.5	

