

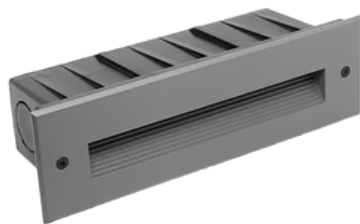


LuminaCast Baffle

TRIAC PWM 1-10V DALI IP65 OUTDOOR RATED RoHS COMPLIANT CE OSRAM CII

Description:

The concrete pour step/wall light offers a sleek and contemporary lighting solution for concrete structures, retaining walls, steps, and stairs. With its low trim profile, it blends seamlessly with the surrounding surfaces. This fixture is highly popular due to its decent power and lumens output. Its easy installation and low maintenance make it a practical choice. The concrete pour step/wall light enhances the ambiance and safety of outdoor spaces effortlessly, adding a stylish touch to any environment.



Model: SP15170524003KDGKP

Optical:

CCT:	3000
Light Source:	15 X 0.2W
Luminance:	104LM
CRI:	>80

Electrical:

Rated Power:	4.8W
Input voltage:	24V DC
LED Driver:	Constant Voltage Input, Constant Current Output

Life:

Lifespan:	50,000 Hrs
Warranty:	5 Years

General:

Dimmable Support:	Triac PWM 1-10V Dali
IP:	65
IK:	10
Operating temperature:	-20°C~40°C
Finish color Availability:	Die-casting Grey powder coated aluminum
Certification:	cETLus



LuminaCast Baffle

TRIAC PWM 1-10V DALI

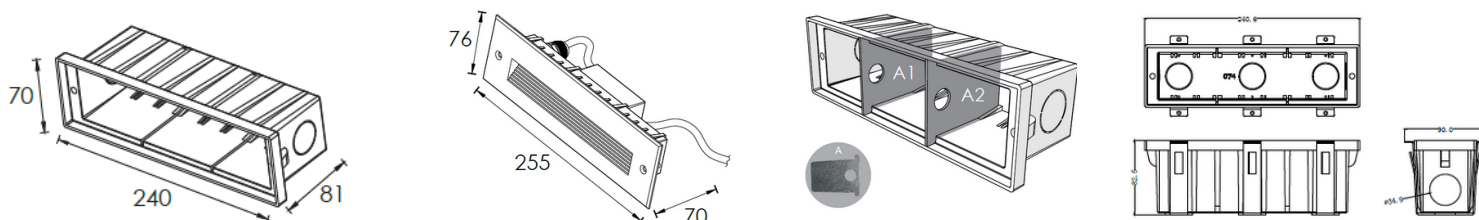
IP65
OUTDOOR
RATED



OSRAM



PRODUCT SIZE



Mounting sleeve characteristic



The above picture-the support plate "A" and "B" are used for preventing deformation of the sleeve during the construction installation process.

Please remove the supporting plate "A" and "B" from the mounting sleeve before the lamp installation





LuminaCast Baffle

TRIAC

PWM

1-10V

DALI

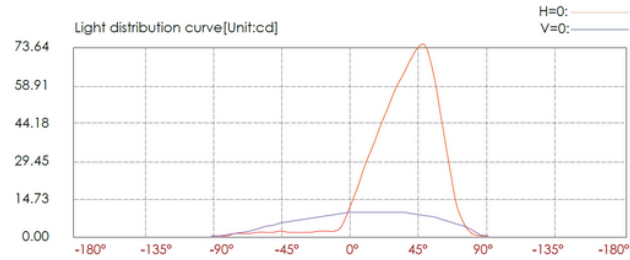
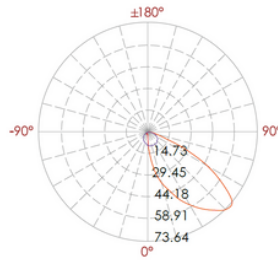
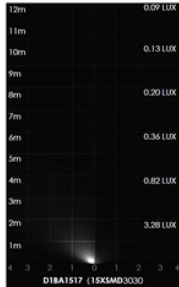
IP65
OUTDOOR
RATED



OSRAM



PHOTOMETRIC



Lux distance curve

Distance (m)	Illuminance at a distance		Beam width	
	Center beam LUX	Beam width V	Beam width H	
2m	3.28 LUX	4.30m	1.70m	
4m	0.82 LUX	8.60m	3.40m	
6m	0.36 LUX	12.9m	5.10m	
8m	0.20 LUX	17.2m	6.90m	
10m	0.13 LUX	21.4m	8.60m	
12m	0.09 LUX	25.7m	10.3m	

Ver.Spread:94.1 Horiz.Spread:46.5

