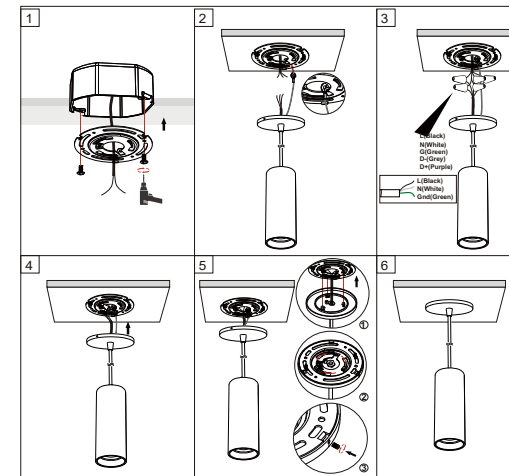
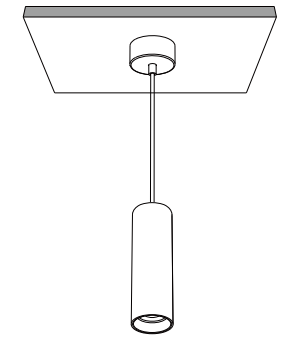


TUBO SERIES
Pendant Light



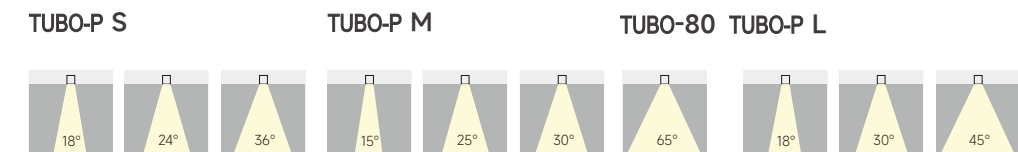
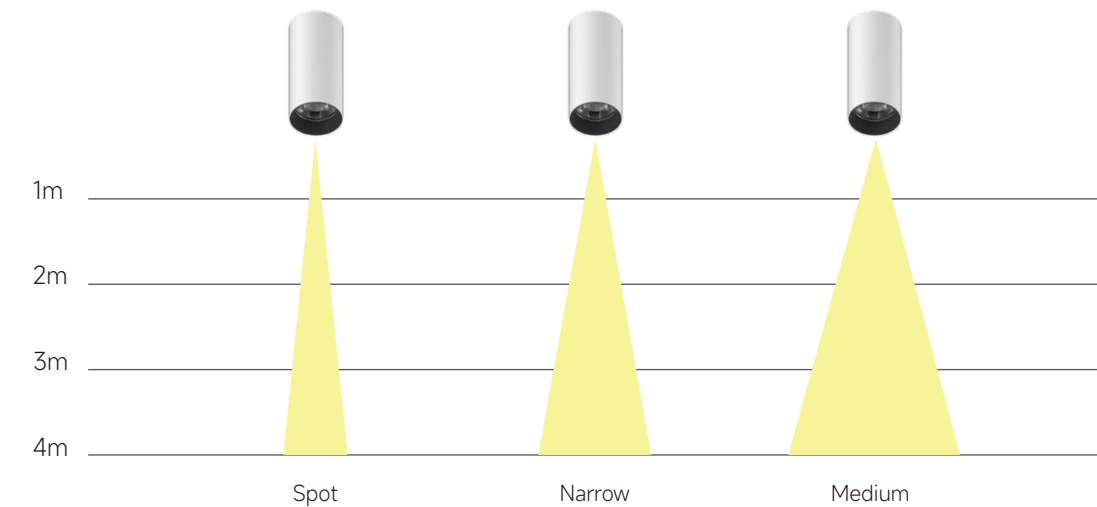
PREMIER

Versatile & Stylish Illumination with the **TUBO** Cylinder Light Fixture
Enhance any space with the **TUBO** Cylinder Light Fixture, designed for both pendant and surface-mounted installations to accommodate various design needs. Featuring a premium black or white powder-coated finish, this fixture combines elegance with durability.
Tailor your lighting with three beam angle options (18°, 24°, 36°) and a choice of black, white, or Gold reflectors to create the perfect ambiance. With multiple power options and sizes, **TUBO** adapts effortlessly to diverse applications.
Engineered for reliability, the 5-year warranty ensures exceptional quality and performance. The sleek, modern design sets **TUBO** apart, making it an ideal choice for residential, commercial, and hospitality settings



Very easy to change lens (twist and lock)

Spot, narrow and medium beam angles are available for different lighting applications



Pendant

Modern aesthetic Ceiling & Pendant light
Engineering to combine maximum performance with a sleek style





TUBO-P S

TUBO-P M

TUBO-P L

Pendant
TUBO-P S / TUBO-P M / TUBO-P L



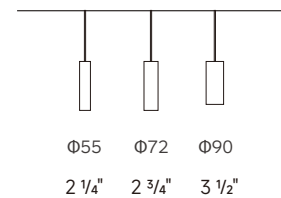
Features

- Cylindrical surface mounted light made of aluminum.
- Ultra-slim housing design with LED driver inside.
- Optimized passive cooling system
- Interchangeable decoration ring for various lighting application.
- Adopt of lens guarantees high luminous efficiency and uniform distribution.
- Easy to change lens (twist and lock) to choose spot, narrow and medium beam angle.

Specifications

- Dimming modes: Phase dim, 0-10V
- Sizes: $\Phi 55\text{mm}$, $\Phi 72\text{mm}$, $\Phi 90\text{mm}$
- Installation: Pendant

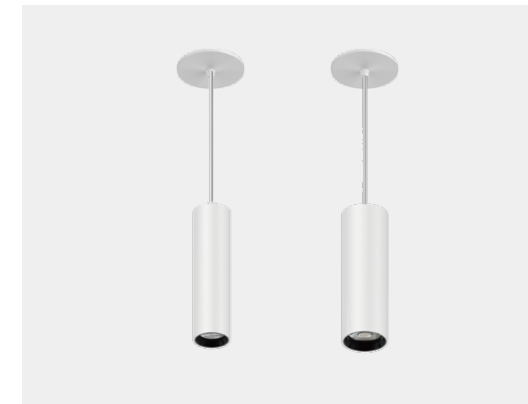
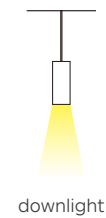
Type



Decoration ring



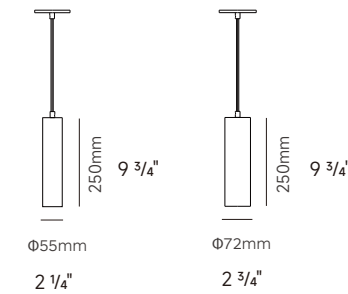
Light distribution



TUBO-P S/M
Pendant



Drawing



11W 720lm-800lm

Code	Size	System LM	LED W	System W	CRI	CCT	Beam
TUBO-P S-11W-930-18D	$\Phi 55 \times 250\text{mm}$	720 lm	9W	11W	90	3000K	18°
TUBO-P S-11W-940-18D	$\Phi 55 \times 250\text{mm}$	800 lm	9W	11W	90	4000K	18°
TUBO-P S-11W-930-24D	$\Phi 55 \times 250\text{mm}$	720 lm	9W	11W	90	3000K	24°
TUBO-P S-11W-940-24D	$\Phi 55 \times 250\text{mm}$	800 lm	9W	11W	90	4000K	24°
TUBO-P S-11W-930-36D	$\Phi 55 \times 250\text{mm}$	720 lm	9W	11W	90	3000K	36°
TUBO-P S-11W-940-36D	$\Phi 55 \times 250\text{mm}$	800 lm	9W	11W	90	4000K	36°

15W 1200lm-1300lm

Code	Size	System LM	LED W	System W	CRI	CCT	Beam
TUBO-P M-15W-930-15D	$\Phi 72 \times 250\text{mm}$	1200 lm	13W	15W	90	3000K	15°
TUBO-P M-15W-940-15D	$\Phi 72 \times 250\text{mm}$	1300 lm	13W	15W	90	4000K	15°
TUBO-P M-15W-930-25D	$\Phi 72 \times 250\text{mm}$	1200 lm	13W	15W	90	3000K	25°
TUBO-P M-15W-940-25D	$\Phi 72 \times 250\text{mm}$	1300 lm	13W	15W	90	4000K	25°
TUBO-P M-15W-930-30D	$\Phi 72 \times 250\text{mm}$	1200 lm	13W	15W	90	3000K	30°
TUBO-P M-15W-940-30D	$\Phi 72 \times 250\text{mm}$	1300 lm	13W	15W	90	4000K	30°

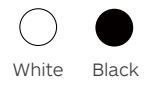
21W 1600lm-1700lm

Code	Size	System LM	LED W	System W	CRI	CCT	Beam
TUBO-P M-21W-930-15D	$\Phi 72 \times 160\text{mm}$	1600 lm	18W	21W	90	3000K	15°
TUBO-P M-21W-940-15D	$\Phi 72 \times 160\text{mm}$	1700 lm	18W	21W	90	4000K	15°
TUBO-P M-21W-930-25D	$\Phi 72 \times 160\text{mm}$	1600 lm	18W	21W	90	3000K	25°
TUBO-P M-21W-940-25D	$\Phi 72 \times 160\text{mm}$	1700 lm	18W	21W	90	4000K	25°
TUBO-P M-21W-930-30D	$\Phi 72 \times 160\text{mm}$	1600 lm	18W	21W	90	3000K	30°
TUBO-P M-21W-940-30D	$\Phi 72 \times 160\text{mm}$	1700 lm	18W	21W	90	4000K	30°

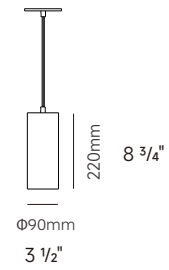
TUBO Series
Pendant Light



TUBO-P L
Pendant



Drawing



28W 2700lm-2900lm

Code	Size	System LM	LED W	System W	CRI	CCT	Beam
TUBO-P L-28W-930-18D	Φ90*230mm	2700 lm	25W	28W	90	3000K	18°
TUBO-P L-28W-940-18D	Φ90*230mm	2900 lm	25W	28W	90	4000K	18°
TUBO-P L-28W-930-30D	Φ90*230mm	2700 lm	25W	28W	90	3000K	30°
TUBO-P L-28W-940-30D	Φ90*230mm	2900 lm	25W	28W	90	4000K	30°
TUBO-P L-28W-930-45D	Φ90*230mm	2700 lm	25W	28W	90	3000K	45°
TUBO-P L-28W-940-45D	Φ90*230mm	2900 lm	25W	28W	90	4000K	45°



TUBO-P Pendant Light Installation Instructions

Please read these instructions carefully before commencing installation and retain for future reference. If in doubt, we advise that you consult a qualified electrician to install the product. These products must not be modified. If any modification is made it may invalidate the warranty and may render the product unsafe. All electrical installations must be carried out according to national electrical code & local regulations.

Important safety Notes

1. Switch off the electricity at the mains before commencing installation or lamp change and (if a fuse box is used) remove the appropriate circuit fuse to avoid accidental switching on of the mains supply.
2. Connect to a 120-277V supply in accordance with relevant electrical standards.
3. Make sure all connections are tight with no loose strands.
4. Ensure fire regulations are not breached when fitting your lights.
5. If you are in any doubt regarding these instructions, consult a qualified electrician.

Warning:

1. For indoor use only
2. Please carefully choose a location for disposal of the flammable package.
3. Do not use defected cable.
4. We do recommend that a qualified electrician should be used to install the products.
5. Do not look at the lighted lamp directly.

