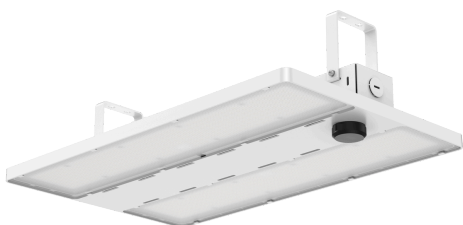




### Auron 36

#### Description

The B36 is a lightweight design luminaire with dimensions close to the golden ratio. The B36 is designed for simplicity with no exposed wires. Customers only need to open the junction box and plug the cable directly into the terminal inside the lamp, which is easy to wire and maintain. In addition, B36 also supports dial adjustment, color temperature adjustment and provides a variety of installation methods, which can meet the needs of a variety of places.



#### Model:

#### Optical:

CCT:	2CCT Selectable 4000K-5000K
Lumens efficacy:	160lm/W@4000K Ra80, 150lm/W@5000K Ra80
LED Type:	LED 2835
CRI:	Ra80



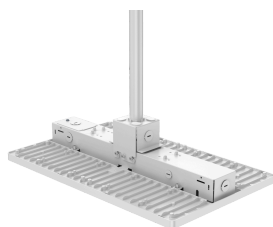
#### Electrical:

Rated Power:	120W to 300W
Input voltage:	277-480Vac, 50/60Hz 120V-277Vac.50/60Hz
Beam angle:	L00B36
Power factor:	>0.94
Control	ON/OFF, Microwave ,PIR sensor



#### Life:

Lumen maintenance: @Ta=25°	100800hrs-L80 160800hrs-L70
Warranty:	5 Years



#### General:

Dimmable Solution:	0-10V
IP:	IP20
Operating Temperature °C/°F:	-30° to +50°/ -22° to +122°
Finish color Availability:	White
Applications:	Warehouse /Industrial facility /Exhibition center Shopping Mall / Gymnasium /Toll Station




**Auron 36**
**Ordering Table**
**Sample: B36-200-UNV-MS-R**

Model	Watt	Input voltage	Options	Installation
B36	200/160/120: 200 300/240/180: 300	120-277: UNV 277-480 :480	Microwave sensor: Ms PIR Sensor: Ps Wire Guard : Wg	Rod : R Cable :C Surface mount :S

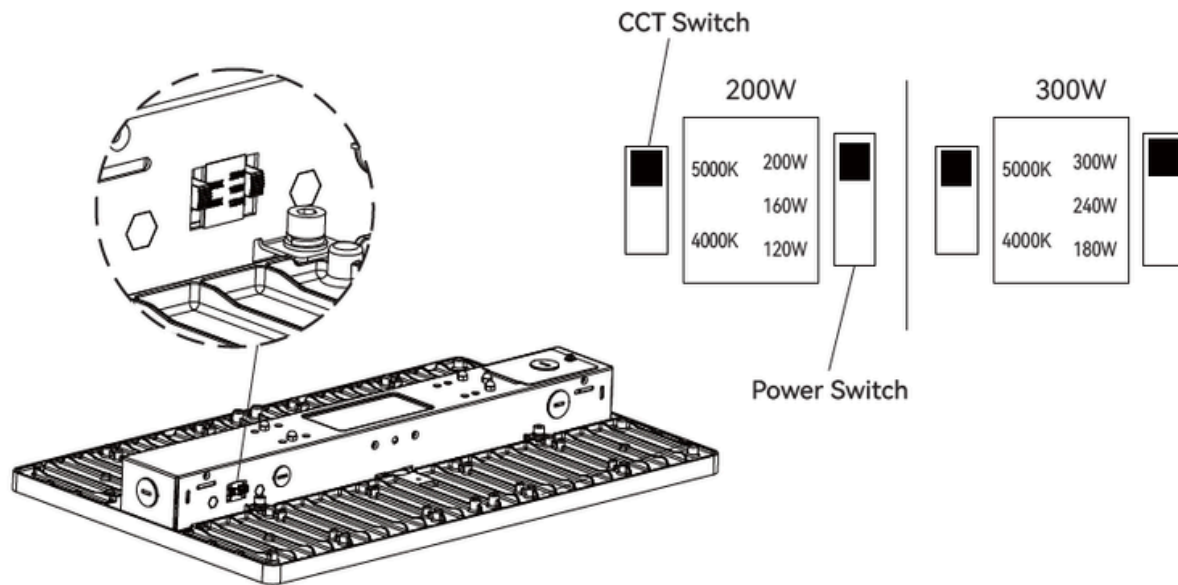
**Specification**

Model No	Size(mm)	Watt(W)	CCT(K)	CRI	LPW@5000K Ra80	Lumens (lm)	Voltage (Vac)	Beam Angle
B36-200W	486×306×78 (19.13"×12.05"×3.07")	200/160/120 (Selectable)	4000, 5000 (Selectable)	80	UP to 160lm/W	up to 31000	120-277	90°
B36-300W	548×344×78 (21.57"×13.54"×3.07")	300/240/180 (Selectable)	4000, 5000 (Selectable)	80	UP to 160lm/W	up to 31000	120-277	90°
B36-200W	486×306×78 (19.13"×12.05"×3.07")	200/160/120 (Selectable)	4000, 5000 (Selectable)	80	UP to 160lm/W	Up to 31000	277-480	90°
B36-300W	548×344×78 (21.57"×13.54"×3.07")	300/240/180 (Selectable)	4000, 5000 (Selectable)	80	UP to 160lm/W	Up to 31000	277-480	90°



## Auron 36

### Power & CCT Selectable & photocell



### Mounting Option

Suspension mount bracket



Pipe mount bracket



Ceiling mounting





## Auron 36

### Accessories



Suspension mount bracket



Ceiling mount



Pipe mount bracket



Microwave Sensor



PIR Sensor

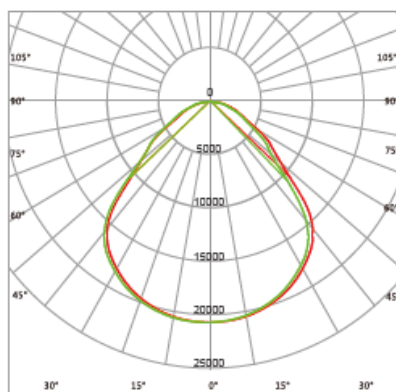


remote control



Wire Guards

### Photometry

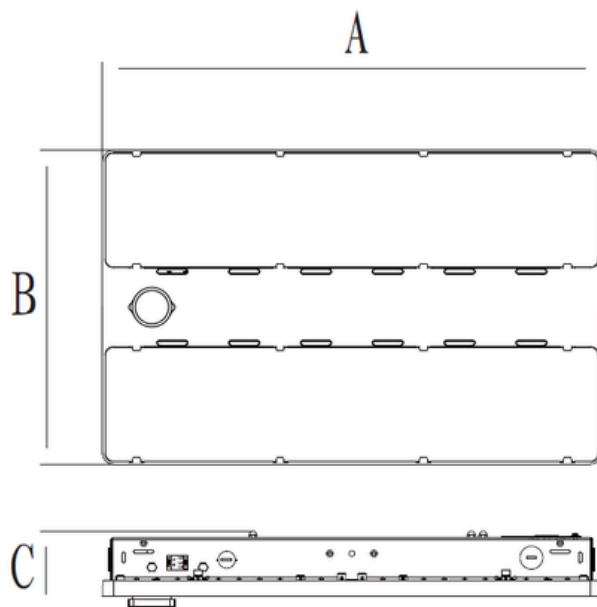


90°



## Auron 36

### Dimensions



### Application Photo

