

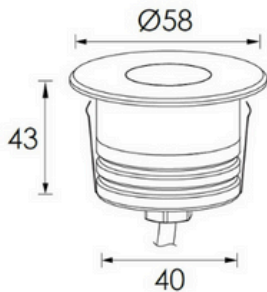
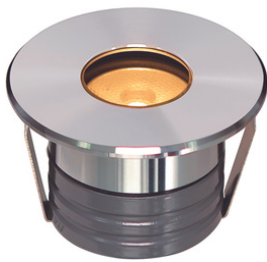


Ignix Shallow



Description:

Sleek and energy-efficient, LED inground lights seamlessly integrate into outdoor spaces. They're versatile, illuminating features and pathways, while being eco-friendly and low-maintenance. This makes LED inground lights a practical and elegant choice for enhancing outdoor safety and aesthetics.



Model: Ignix Shallow

Optical:

CCT:	3000K / 6000K
Lumen out put::	110LM
LED :	NICHIA
CRI:	80

Electrical:

Rated Power:	2W
Input voltage:	24 VDC
Beam angle:	25°

Life:

Lifespan:	50,000 Hrs
Warranty:	2 Years

General:

Dimmable Solution:	Triac PWM 1-10V Dali
IP:	IP67
IK:	08
Operating temperature: :	-20°C~40°C
Housing:	12# Die-casting dark grey powder coated aluminum T=60-80µm. Adhesion of ISO class 1/ASTM class 4B

Mounting Option:

Recessed in ground

Fixture Color:

Grey powder coated

Application:

Outdoor, landscape , pathway

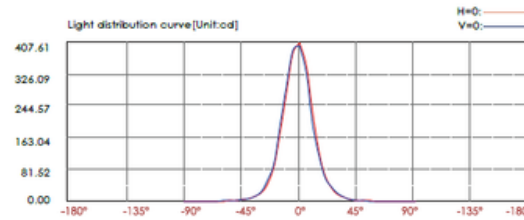
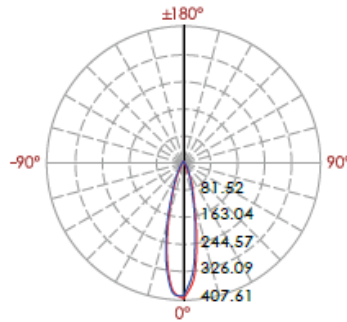
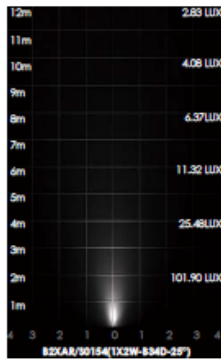




Ignix Shallow



DISTRIBUTION



Lux distance curve

Distance (m)	Beam width (V)	Beam width (H)	Center beam LUX
2m	0.9m	0.9m	101.90 LUX
4m	1.8m	1.8m	25.48 LUX
6m	2.7m	2.6m	11.32 LUX
8m	3.6m	3.5m	6.37 LUX
10m	4.5m	4.4m	4.08 LUX
12m	5.4m	5.3m	2.83 LUX

Ver.Spread:25.3 Horiz.Spread:24.7

INSTALLATION DIAGRAM



A: Minimum space for external driver is 48mm

APPLICATIONS

