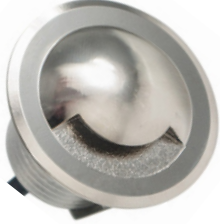




LED MODULAR RECESSED STEP/ WALL LIGHT



Description:

The LED Modular Mini Down/Up/wall Light is a versatile lighting solution designed for a wide range of applications. With its compact design and powerful performance, this light module is suitable for use as a cabinet light, step light, deck light, and display light. Its modular construction allows for easy customization, making it adaptable to various settings. The uniform light engine can be effortlessly fitted onto different trims, providing flexibility for diverse applications.



Model: IDLR120222443KAL

Optical:

CCT: 3000K
Lumen output: 160LM
Beam degree: 45°

Electrical:

Power: 2W
Input voltage: 12V-24VDC



Life:

Lumen maintenance: 50,000 Hrs
Warranty: 2 Years



General:

Dimmable Solution: Triac
IP: IP67
Finish color Availability: Brushed Nickel / Black /White
Certification: cETLus

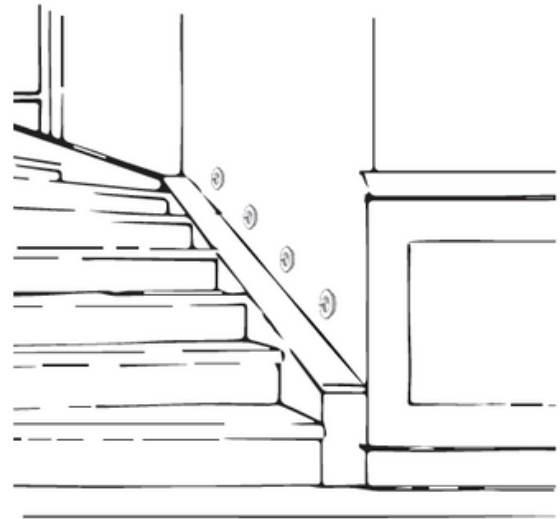
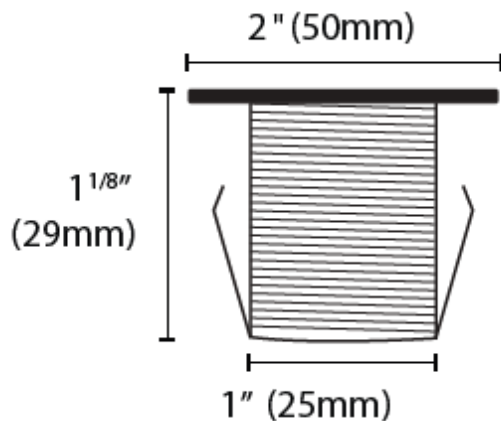




LED MODULAR RECESSED STEP/ WALL LIGHT

PRODUCT SIZE:

Hole cutout size: $1\frac{3}{8}$ " (35mm)



FEATURES

- **Versatile Application:** Suitable for use as a cabinet light, step light, deck light, and garden light.
- **Modular Design:** The product features a modular construction, allowing for easy customization and adaptation to different environments.
- **Uniform Light Engine:** The consistent light engine ensures a uniform and well-distributed illumination for a visually appealing effect.
- **Wide Application Capability:** The mini down/up light is designed to meet the lighting needs of various settings, enhancing both functionality and aesthetics.
- **Interchangeable Trims:** The same light engine can be effortlessly fitted onto different trims, providing a seamless transition between applications.
- **Energy-Efficient:** LED technology ensures energy efficiency, reducing power consumption while maintaining high-quality illumination.
- **Durable Construction:** Built with durable materials, the LED Modular Mini Down/Up Light is designed to withstand the rigors of both indoor and outdoor use.
- **Easy Installation:** The product is designed for user-friendly installation, ensuring a hassle-free setup process.