

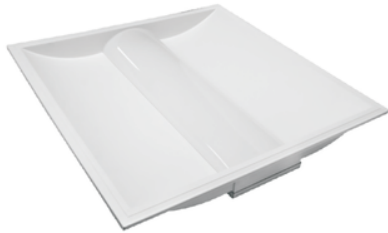


LED TROFFER LIGHT

Description:

Introducing LED Troffer Lights, designed to enhance both functionality and aesthetics in commercial spaces. Available in three versatile sizes 2' x 4', 1' x 4', and 2' x 2' these lights offer superior energy efficiency with an impressive 125 lm/w output. The durable plastic material ensures long-lasting performance, making it ideal for high-traffic areas. Installation is quick and effortless, allowing for minimal disruption to your workspace. LED Troffer Lights meet stringent safety standards, having passed the Antiflame Spread Test and achieved Class B recognition under the National Fire Protection Life Safety Code 101.

Model : PLLST



Optical:

Lumen efficacy :	125LM/W
LED Type:	SMD 2835
CRI:	≥80

Electrical:

Power Tunable:	25 W - 50W
CCT Tunable Series:	3500K /4000K / 5000K
Input voltage:	120-277Vac or 120-347Vac
Power factor:	>0.9
THD:	<20%

Life:

Lumen maintenance:	50,000 hrs
Warranty:	2 Years

General:

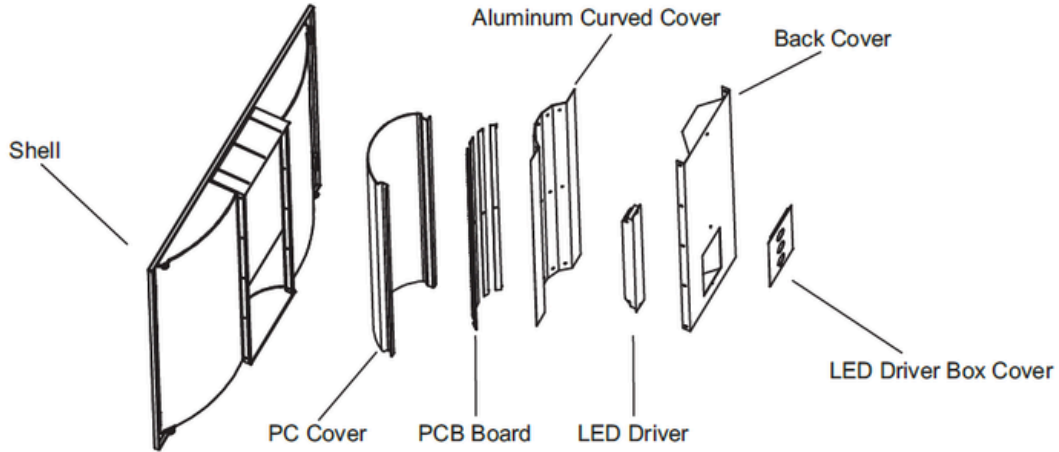
Dimmable:	0-10V
Finish color Availability:	White
Material:	Plastic Frame + PC
Certification:	UL



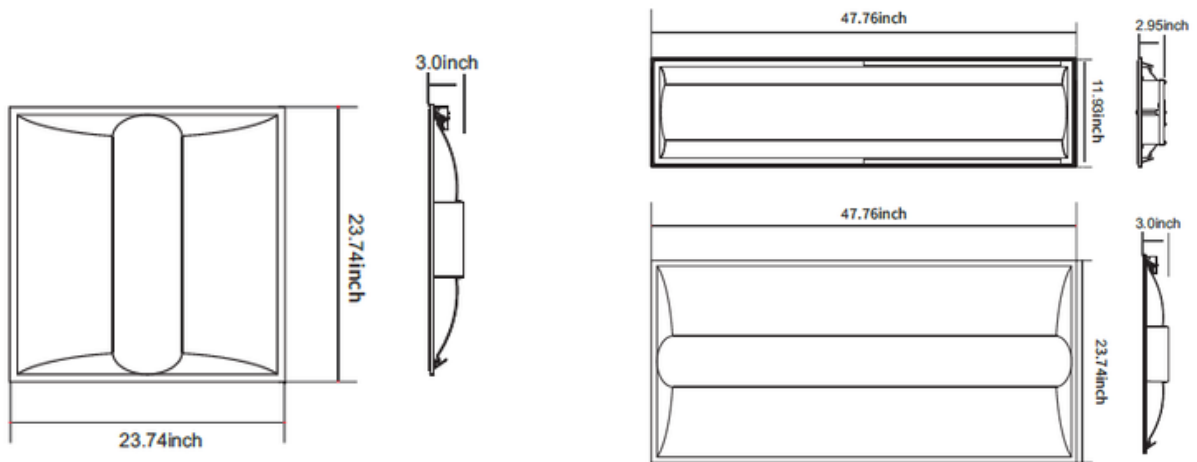


LED TROFFER LIGHT

PRODUCT STRUCTURE



DIMENSION:



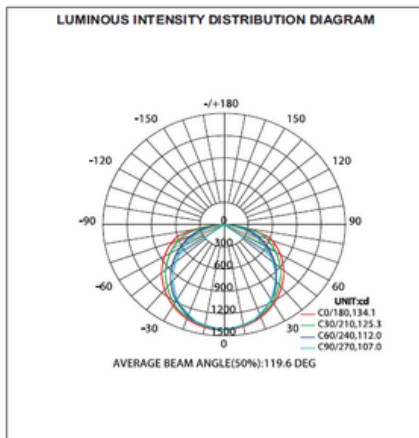


LED TROFFER LIGHT

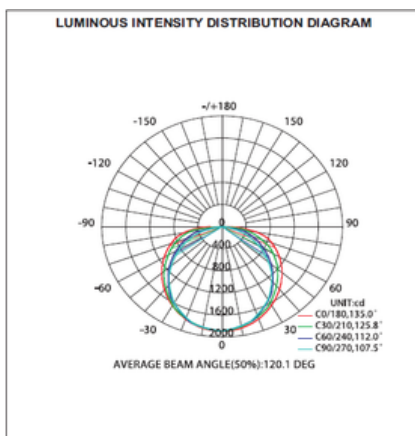
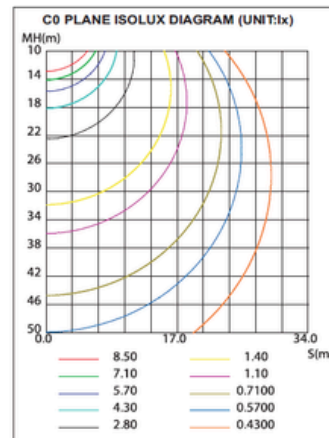
APPLICATIONS



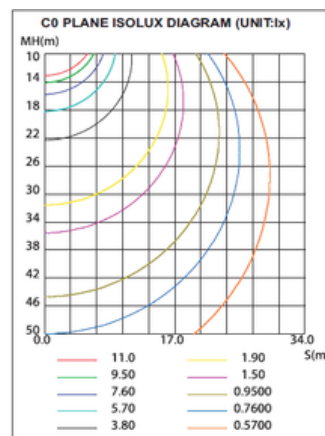
LUMINARE PHOTOMETRIC TEST REPORT



23.74x23.74inch 35W 5000K



23.74x47.76inch 50W 5000K



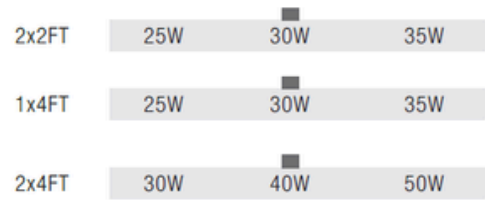


LED TROFFER LIGHT

ORDERING INFORMATION



Power Tunable



CCT Tunable



Example : PLLST-22-UNV

Model No.	Watts(W)	Input Voltage	Efficacy	CCT(K)	Size(inch)
2X2:PLLST22	25-30-35	AC120-277V : UNV AC120-347V : 347	125LM/W	3500-4000-5000	23.74*23.74*3.0
1X4:PLLST14	25-30-35	AC120-277V : UNV AC120-347V : 347	125LM/W	3500-4000-5000	47.76*11.93*2.95
2X4:PLLST24	30-40-50	AC120-277V :UNV AC120-347V :347	125LM/W	3500-4000-5000	47.76*23.74*3.0