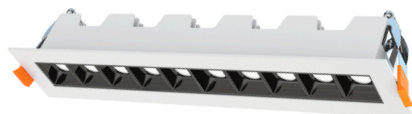
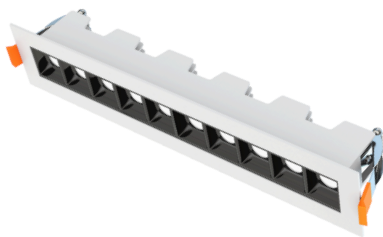
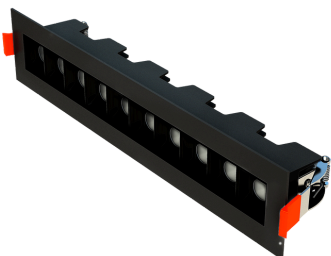




## Orbis Micro 10

### Description:

The Mini LED Linear Downlight is a stylish and versatile lighting fixture that combines modern design with superior functionality. Its slim, linear shape fits discreetly into ceilings, providing uniform and energy-efficient lighting. Perfect for highlighting architectural details or enhancing ambient lighting, this downlight is an excellent choice for both residential and commercial spaces.



**Model:** MLH1018115CXXGS

#### Optical:

CCT:	27K/30K/35K/40K/50K 5CCT Tunable
Lumen out put:	1000LM
Efficiency:	65LM/W
Power Factor	>0.9
CRI:	>90Ra
LED Chip:	SMD3535

#### Electrical:

Rated Power:	18W
Input voltage:	100-130V AC, 50/60HZ
Beam angle:	15° / 30° / 45°

#### Life:

Lumen maintenance:	70% light output at 50000hrs
Warranty:	2 Years

#### General:

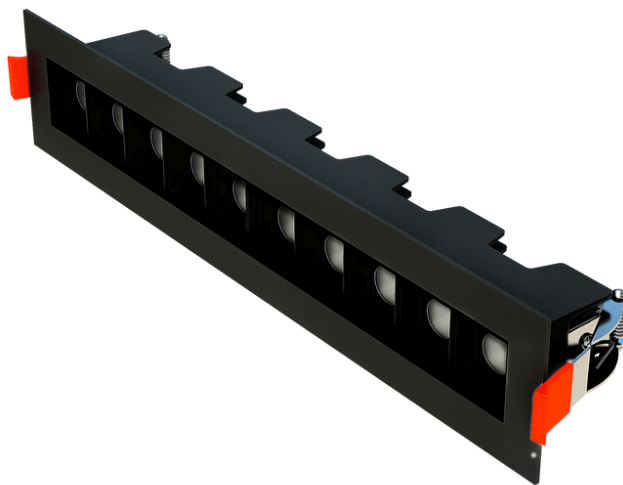
Dimmable Solution:	Triac dimming 10-100%
Approved Locations	Insulated ceilings
Finish color Availability:	White and black
Type:	IC , Air Tight
Certification:	cETL



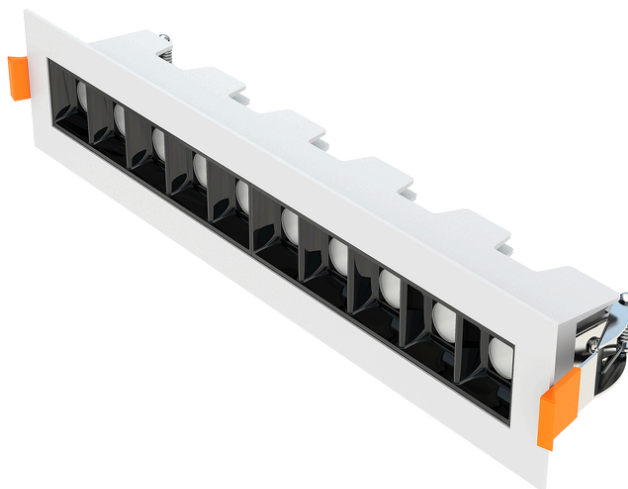
## Orbis Micro 10

### PRODUCT OPTION

**10 Cells Linear Downlight**  
**Black Body**



**10 Cells Linear Downlight**  
**White Body**





## Orbis Micro 10

### Dimension Drawing

LENGHT	WDITH	HEIGHT	CUT SIZE
11.65"	2.3"	2.44"	10.70" X 1.41"

