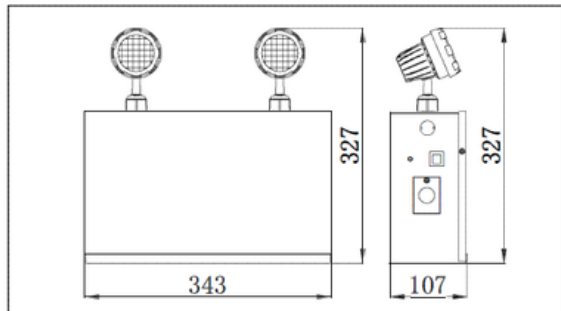




PowerCell-140W

Description

This emergency light is constructed with steel housing and lightweight thermoplastic heads in matching color. It is presented in a simple and modern design with high efficiency LED remote heads. Universal mounting pattern and keyhole slots are stamped on the back and conduit knockouts on the sides of each unit.



Model:PowerCell-12V-140W
Electrical parament
Workingvoltage:AC120V/AV347V 60Hz
Input Wattage 14W-16W
Output Wattage: 2*5W(lamp head) ;Max: 130W
Output Voltage: 12V DC
Lead-AcidBattery 12V/12Ah
Color temperature:6000K-6500K;Ultra bright LED
Recharge time: 35 Hours
Emergency duration: > 30 minutes
Material: Material: Metal housing ,PC light heads



PowerCell-140W

EMERGENCY LIGHT INSTRUCTIONS

ATTENTION:

Read and follow all safety instructions
Indoor use only
Do not allow power cords to contact hot surfaces
Do not install near gas or electric heaters
Battery acid may cause burns; flush with water and seek medical help if contact occurs
Mount equipment to prevent unauthorized tampering
Use only manufacturer-approved accessories
Do not use equipment for unintended purposes
Servicing must be performed by qualified personnel only
Save instructions for future reference

INSTALLATION INSTRUCTIONS

Hardwired Installation:

Use an unswitched rated AC supply; do not energize during installation
Leave minimum 8 in. (200 mm) of wire slack in the junction box
Open housing by removing side cover screws
Use provided knockouts and keyhole slots for wiring and mounting
Mount unit securely; do not rely on junction box alone for support
Connect AC supply to transformer:
Black: 120 V AC (Line)
Red: 347 V AC (Line)
White: Neutral
Green: Ground
Insulate all unused wires to prevent shock or equipment failure
Connect ground wire in accordance with local electrical codes
Install batteries if shipped separately
Connect installed batteries to the circuit board
Secure all internal wiring
Reinstall cover and tighten screws
Energize AC power
If supplied with a line cord, plug into appropriate receptacle
Adjust lamp heads for best light distribution and tighten set screws

OPERATION

Press TEST switch to simulate power failure
Charge indicator turns off and DC lamps turn on during test
Release TEST switch to return to normal operation
Charge indicator illuminates when charging
High-charge LED may cycle on/off during standby to maintain battery performance



PowerCell-140W

MAINTENANCE

- Test unit every 30 days for at least 30 seconds
- Perform annual full-duration test as required by code
- Maintain written records of all tests and repairs
- Replace batteries or repair unit if it fails any test
- Clean lenses regularly for maximum light output
- Use only manufacturer-approved replacement parts to maintain warranty

TROUBLESHOOTING HINTS

EMERGENCY LAMPS DO NOT COME ON AT ALL

Pilot Light is out before test

Check AC supply - be sure unit has 35 hour AC supply (un-switched).

AC supply is OK, and indicator light is out, replace PC Board Assembly .Pilot Light is on before test.. Either the output is shorted or overloaded, or the battery is not connected.

Battery is severely discharged. Allow 35 hours for recharge and then retest. NOTE: This could be the result of a switched AC supply to the unit (which has been turned off at some point), a battery with a shorted cell, an old battery or a battery which has been discharged due to a long power outage and is not yet fully recharged.

EMERGENCY LAMPS COME ON DIM WHEN TEST BUTTON IS PRESSED

Battery discharged - permit unit to charge for 30 hours and then retest. If lamps are still dim, check charger for proper function. If charger functions correctly, replace battery.

EMERGENCY LAMPS COME ON WHEN BATTERY IS FIRST CONNECTED

Battery may be connected in reverse polarity. Check connections. Connect Positive lead to Positive battery terminal and Negative lead to Negative battery terminal. The lamps should then turn off and the charge indicator should light when AC power is applied. (Fig.3)

EMERGENCY LAMPS COME ON DIM WHEN AC POWER IS ON

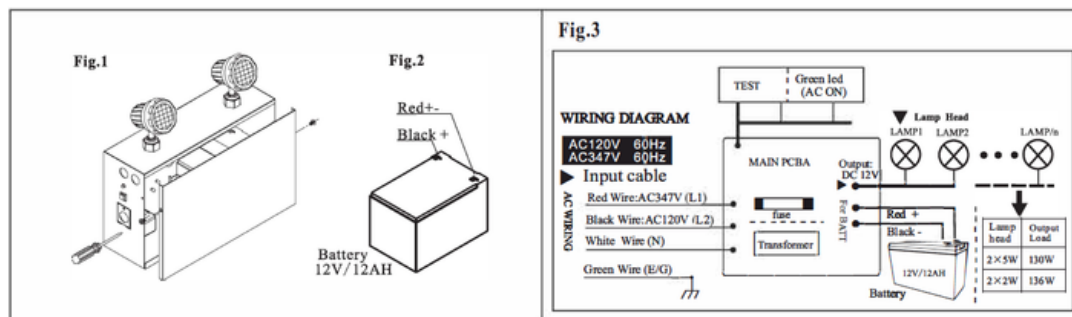
Check supply voltage and AC connections. This emergency light is provided with brownout protection.

The AC supply must be at least 80% of nominal (120V on a 347V line) for equipment to function normally.

At lower voltages the emergency lamps will begin to glow dimly until the source voltage drops below the full turn-on point. NOTE: This condition may also be caused by incorrectly connecting a 120 Volt supply line to the 347-Volt transformer lead.

NOTHING HAPPENS WHEN THE UNIT IS ENERGIZED

Some models have a standard time delay built into the design of the charger board. Please allow 15 minutes with AC current connected. At this point the LED AC-ON and CHARGE lights should illuminate.





PowerCell-140W

Fig.4.1

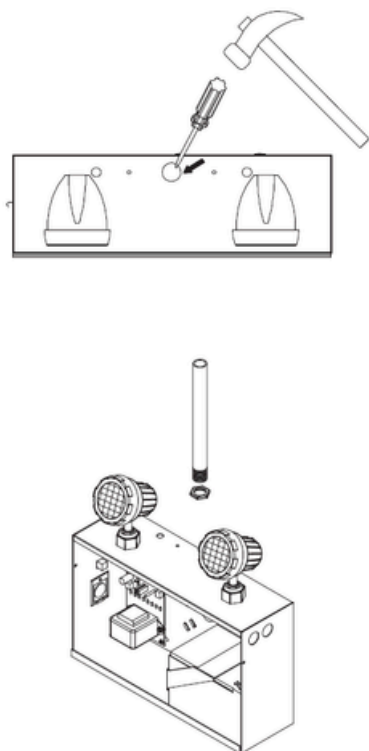
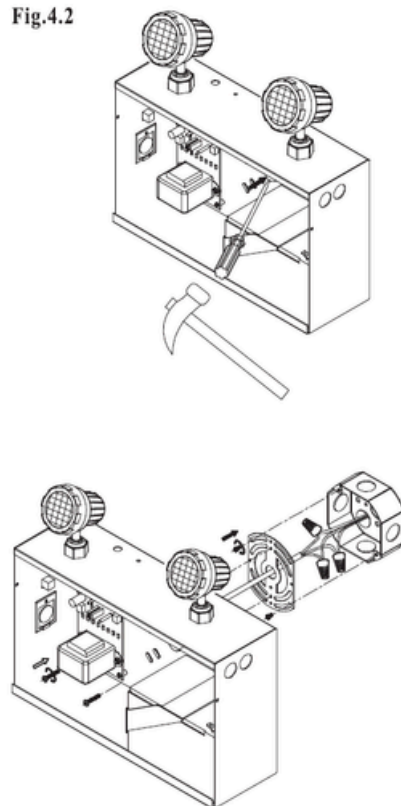


Fig.4.2



Wall Mount

Fig.5

