



Revo



Description:

The Revo Series is a versatile and high-performance LED retrofit solution designed to modernize outdated 5-6" pot lights in older commercial spaces. Available in 4", 6", 8", and 10" sizes, it features wattage and CCT selectability, delivering a wide range of lumen outputs to meet various lighting needs.

Designed for both retrofit and new construction, the Revo can be optionally equipped with an emergency driver and rough-in plate, making it ideal for drywall or T-bar ceiling installations. IC-rated and wet-location approved, the Revo Series combines performance, flexibility, and reliability—making it an ideal choice for commercial lighting upgrades.



Model: Revo IV VI VIII X

Optical:

CCT:	5CCT selectable (2700K-5000K)
Efficacy:	130-140lm/w
CRI:	>80
Beam Angle	80° 4"&6" 90° 8"&10"

Electrical:

Rated Power:	8-40 Watt selectable
Input voltage:	120VAC / 120-277VAC / 120-347VAC

Life:

Lifespan:	L80 (17K) :102,000hrs
Warranty:	5 Years

General:

Dimmable Solution:	1-10V Dimming / Triac Dimming
Environment:	Wet Location
Operating temperature:	-10°C~40°C
Finish color Availability:	White
Material:	Aluminum powder coated
Certification:	cETLus , FCC





Revo



Performance :

Model No.	Size	Efficacy	Max Lumen	Beam Angle	Voltage	Dimming
Revo IV	4"	100-110lm/w	1760lm	80°	120 /120-277 VAC	Triac /0-10V
Revo VI	6"	100-110lm/w	3300lm	80°	120 / 120-277 / 120-347 VAC	Triac / 0-10V /Dali
Revo VIII	8"	100-110lm/w	3850lm	90°	120 / 120-277 / 120-347 VAC	Triac / 0-10V /Dali
Revo X	10"	100-110lm/w	4400lm	90°	120 / 120-277 / 120-347 VAC	Triac / 0-10V /Dali

Ordering Table :

EXAMPLE:REVO IV-30-UNV-EM15-NC1-BI-S-R-W

Model	Power	Voltage	DIM	Option
Revo IV Revo VI Revo VIII Revo X	6W/8W/10W/12W/16W:16 12W/16W/22W/26W/30W:30 16W/22W/26W/30W/35W:35 22W/26W/30W/35W/40W:40	120 :11 120-277:277 120-347:347	Triac: T 1-10V :UNV Dali:D	Emergency Driver 8W 90min: EM8 Emergency Driver 15W 90min : EM15 New Construction Plate Drywall : NC1 New construction Plate T Grid : NC2

Driver Option	Trim Option	Trim Shape	Front cover finish
Built In driver :BI Junction Box : JB	Smooth : S Baffle : B	Round : R Square : S	White :W Black:B Silver :S Bronze : Z



Revo



Features & Specifications :

Design :

The REVO Series is an economical and versatile LED downlight solution featuring field-adjustable lumen output and color temperature. Available in 4", 6", 8", and 10" sizes, it's designed to meet a wide range of commercial lighting needs. REVO is offered with 80 CRI and supports multiple dimming options, including 0-10V (down to 1%), Triac, and ELV dimming, making it compatible with various control systems and retrofit scenarios.

Features & Advantages :

- 5 CCT & 5 Wattage Selectable: One fixture covers multiple application needs.
- 0-10V Dimming Down to 1%: Smooth, flicker-free dimming for precise lighting control.
- Available in 4", 6", 8", and 10" Sizes: Full size range for maximum flexibility.
- Multiple Dimming Options: Supports 0-10V, 3-in-1 dimming, Triac/ELV, and DALI systems.
- High Luminous Efficacy: 100–110 lm/W standard; premium versions up to 140 lm/W.
- Integrated Whip Design: Easily connects to junction box—perfect for retrofitting CFL pin-based fixtures.
- Wide Voltage Compatibility: Operates on AC120-277V and AC120-347V.
- Wet Location Rated: Safe for use in damp or exposed environments.

Construction

- Durable Aluminum Body with a powder-coated finish for corrosion resistance and long-term reliability.
- Low-Glare Plastic Lens provides soft, uniform illumination with reduced visual discomfort.
- Plastic Driver Housing ensures lightweight design and safe thermal separation.
- Flexible Steel Conduit with 1/2" or 3/8" snap-in connectors allows direct connection to existing junction boxes.
- Spring-Loaded Clips hold the fixture securely against the ceiling for a clean, tool-free installation.
- Dual DIP Switches allow for on-site wattage and CCT selection, providing installation flexibility.
- Available with Optional Metal Junction Box for streamlined ordering and installation in new construction or retrofit applications.

Extra Accessories (Available to Order)

- Surface-Mount Housing – Available for 6" fixtures in White and Black finishes, ideal when recessed mounting is not feasible.
- Rough-In Plate – Offered with or without mounting bars, compatible with drywall and T-grid ceiling systems for new construction setups.
- Goof Rings – Available for all sizes to adapt oversized existing cutouts to match the fixture's required opening.
- Emergency Backup Kits – Includes 8W or 15W drivers with up to 90 minutes of discharge time, complete with safety cable for secure installation.
- Decorative Front Covers – Optional color finish trims available to match various interior aesthetics.

Dimming Solutions

The REVO Series supports a wide range of dimming options to meet diverse project requirements and control systems:

- 0-10V Dimming (down to 1%) — Compatible with 120-277V and 120-347V input voltages for smooth, flicker-free dimming across all sizes.
- 3-in-1 Dimming — Combines Triac, ELV (for 120V), and 0-10V (for 120-277V); available for 6", 8", and 10" fixtures.
- Triac & ELV Dimming — For 120V input, compatible with 4", 6", 8", and 10" sizes, offering flexibility with residential-style dimmers.
- DALI Dimming — Supported for 120-347V input, available on 6", 8", and 10" models for advanced lighting control applications.

Certifications

The REVO Series meets a wide range of industry standards, ensuring safety, energy efficiency, and regulatory compliance:

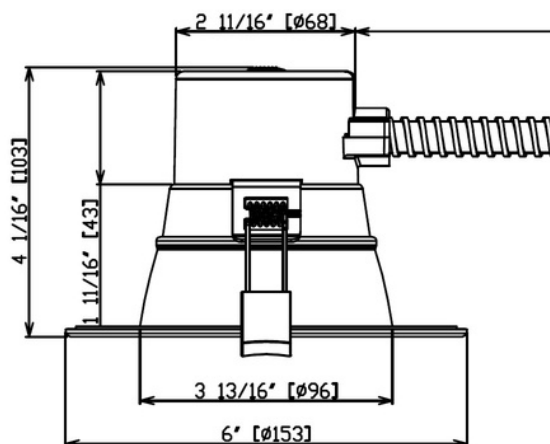
- cETLus Certified – Compliant with both U.S. and Canadian electrical safety standards.
- FCC Compliant – Meets electromagnetic interference requirements for commercial use.
- Title 24 JA8 Compliant – Approved for use in California energy code-regulated projects.
- DLC V6.0 Qualified – Meets DesignLights Consortium standards for high-performance LED products.
- ENERGY STAR® Certified – Recognized for energy efficiency and long-term savings.



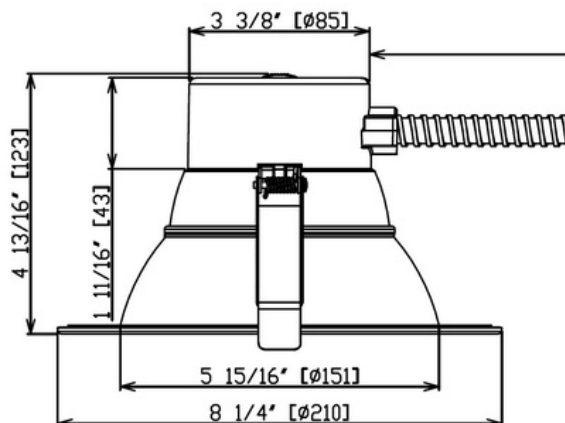
Revo



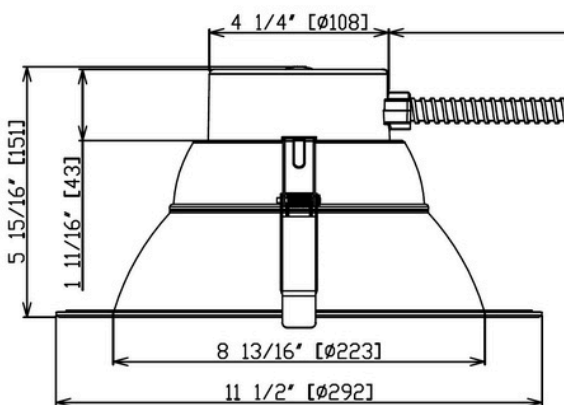
Revo IV 4"



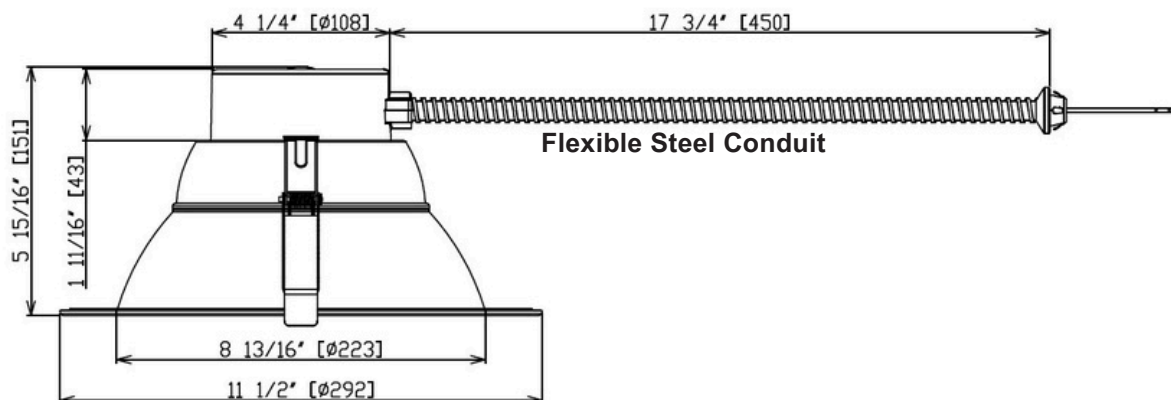
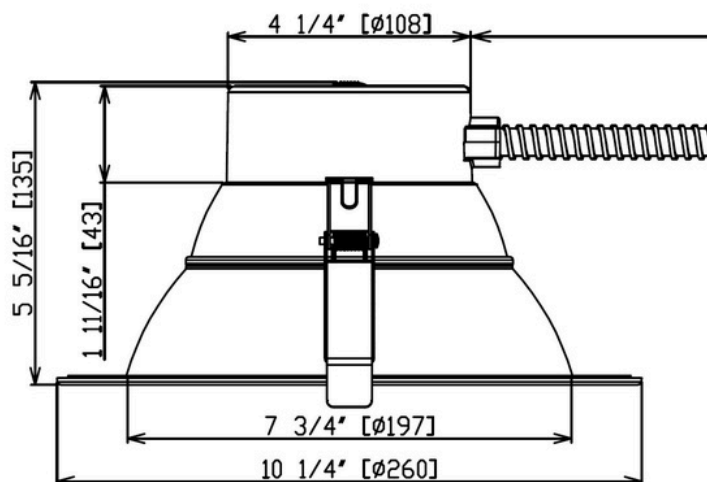
Revo VII 6"



Revo VIII 8"



Revo X 10"





Revo



Trim options :

Baffle Reflector



Smooth Reflector



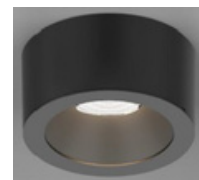
Trim finish option



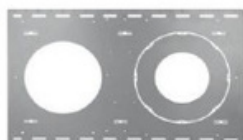
6" - 8" Square Model



6" Surface mount housing



New construction rough in plate Dry wall



New Construction Rough in plate with hanger bar



New construction rough in plate T-Grid

