



## Simply Track

### SPECIFICATION SHEET



### Description:

Efficient and versatile, our LED Head Track Light offers precise illumination with adjustable heads. Featuring energy-saving LED technology and a sleek design, it's perfect for any space, from homes to offices



**Model:** TRSL1511003KWHPM

#### Optical:

CCT:	3000K
Lumen per wattage:	80Lm/W
LED :	COB
CRI:	80Ra

#### Electrical:

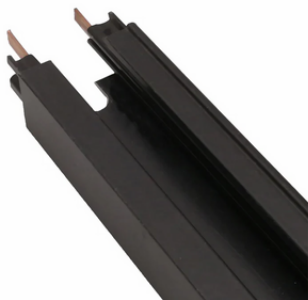
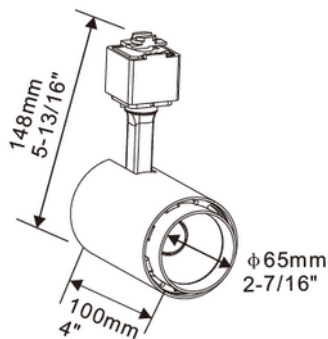
Rated Power:	15W
Input voltage:	120V / 60HZ
Track:	2Wire 1 Circuit

#### Life:

Lifespan:	30,000hrs
Warranty:	2 Years

#### General:

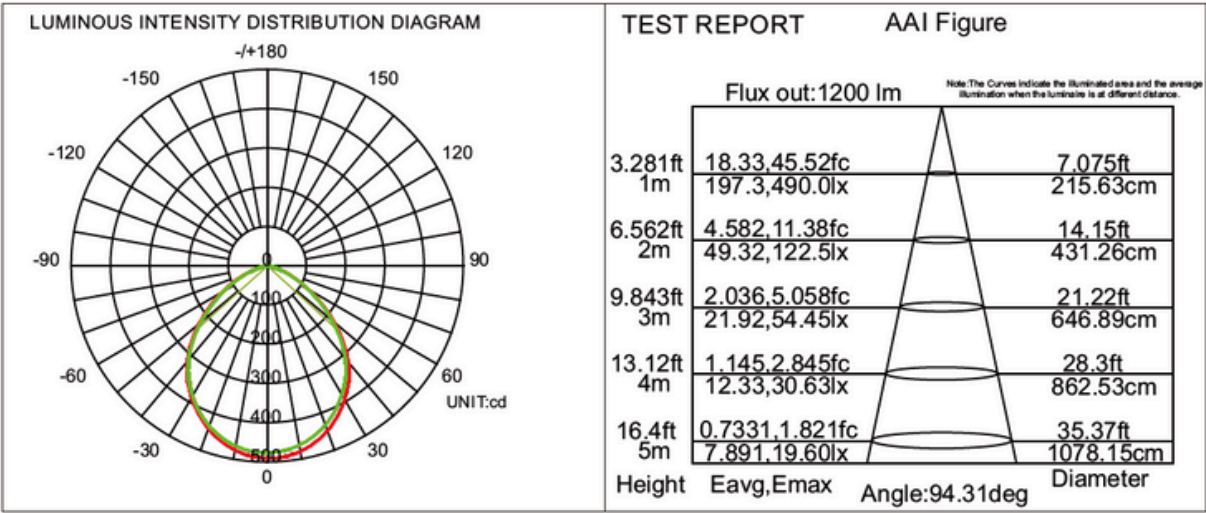
Dimmable Solution:	Triac
Body:	White,Black
Certification:	cETLus





Simply Track

SPECIFICATION SHEET





## LED Track Light

### SPECIFICATION SHEET



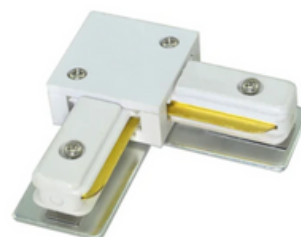
### ACCESSORIES



T-CONNECTOR



CROSS-CONNECTOR



L-CONNECTOR



LIVE END CONNECTOR



I-CONNECTOR



LIVE END CONNECTOR  
WITH J BOX



END CAP



FLOATING CANOPY



## Simply Track

## SPECIFICATION SHEET



### Description

Extruded 2 wire aluminum track with 20-amp rated flat, solid integral conductors. These halo tracks can be joined together using any of the track connectors. Available in 2, 4, 6, 8 and 12-ft. Available in two colours: Black & White

#### L Series: (TR)

1. Place the connector into track groove and make sure that the side with the locking clip is opposite the polarity groove on the track.
2. Push towards track and turn clockwise 90°.
3. To remove the fixture, pull the locking clip downwards (away from the track) and turn counter clockwise 90°.
4. Once assembly is complete, turn on power to confirm fixture is working properly.

#### Features

Extruded aluminum construction  
Low profile aesthetic design.  
Solid 12- gauge conductors.  
Polarity groove.  
Surface or stem mounted (mounting hardware supplied).  
20 Amp.

#### Electrical

0.030" diecast aluminum construction with 0.045" PVC insulators holding 12 gauge flat conductor wiring. Polarity groove is located on supply lighting units in a flexible ways.

#### Compatibility

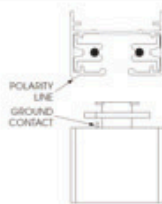
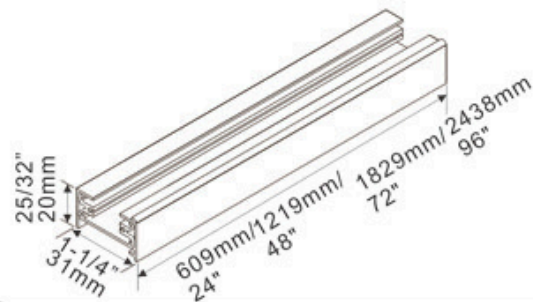
2 wire track system is compatible with all halo® Style Track, accessories and connectors.

#### 1-circuit Track

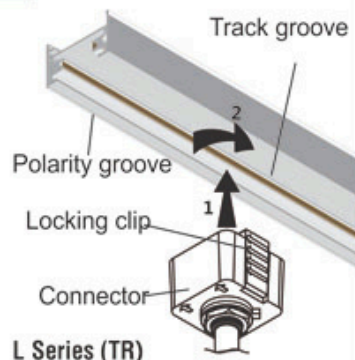
Single circuit track is available for 120V APPLICATIONS. Single hot and neutral conductors are rated for 20 Amps per branch circuit. Copper electrical conductors are concealed in an insulating thermo plastic low profile track cross-section.

### 2 Wire Line Voltage Track

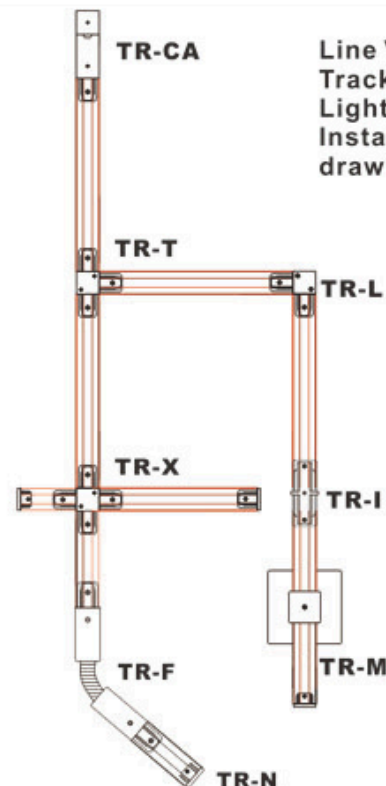
Catalog Number: **TR-2'4'6'8'**



L Series (TR)



L Series (TR)



Line Voltage  
Track Fixtures  
Lighting  
Installation  
drawing