



SlimBeam



Description:

Engineered for performance and versatility, this slim-profile LED flood light delivers powerful illumination in a compact, modern housing. Available in 50W to 300W, it is ideal for a wide range of outdoor applications including building facades, parking lots, sports areas, and general site lighting.

With selectable 4000K and 5000K color temperatures, it provides crisp, clear visibility tailored to your environment. The sleek design not only enhances aesthetics but also ensures efficient heat dissipation and ease of installation. Designed for durability and long-lasting performance, this fixture is the perfect balance of form and function.

Model

Optical:

CCT:	5000K (4000K Optional)
Lumen out put:	7000LM/14000LM/ 21000LM/ 28000LM/ 42000LM
Lumen Efficacy:	140LM / W(5000KR _a 70)
LED Type:	SMD 3030
CRI:	Ra70

Electrical:

Rated Power:	50W-300W
Input voltage:	120-277 VAC
Beam angle:	F00801, F01601, F01602, F01603, F01604, F01605, glass
Power factor:	>0.92

Life:

Lifespan:	40,000hrs-L90 / 83,000-L80 / 132,000-L70
Warranty:	5 Years

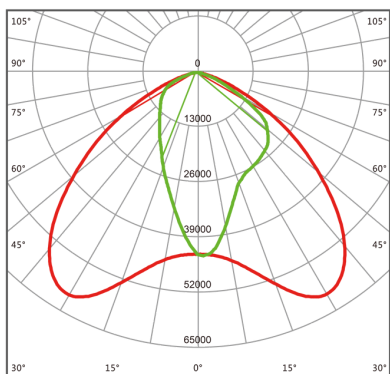
General:

Dimmable Solution:	(0 -10V)
Control:	On / Off Switch / Photocell
IK:	IK08
IP:	IP66
Material:	Aluminum Alloy
Operating temperature:	-30°C to + 50°C(-22°F to 122°F)
Finish color Availability:	Black powder coating
Certification:	cETLus

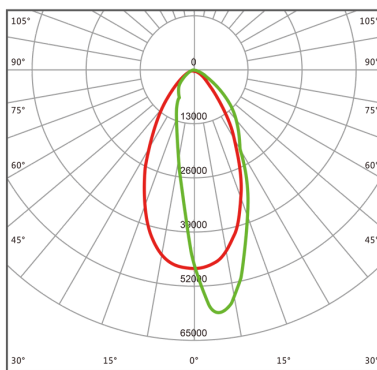


SlimBeam

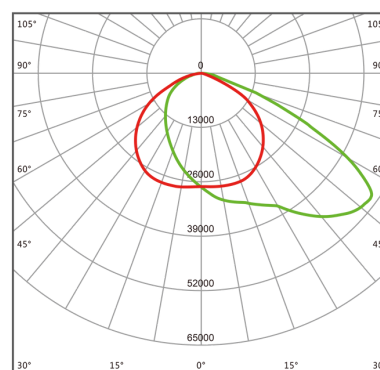
Photometry



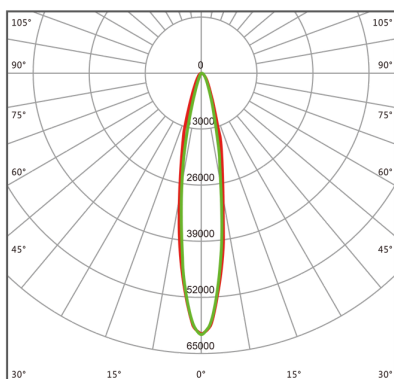
F00801



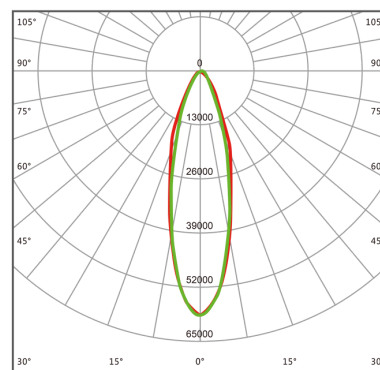
F01601



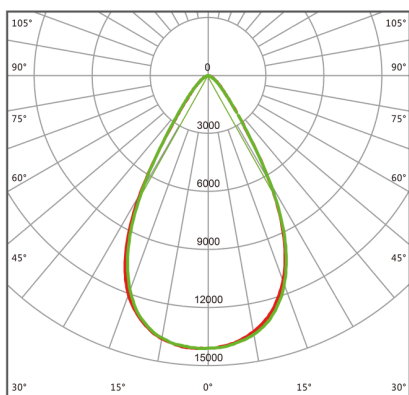
F01602



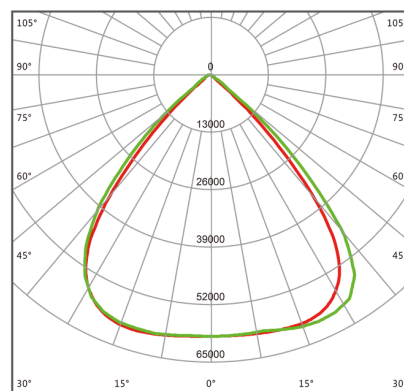
F01603



F01604



F01605

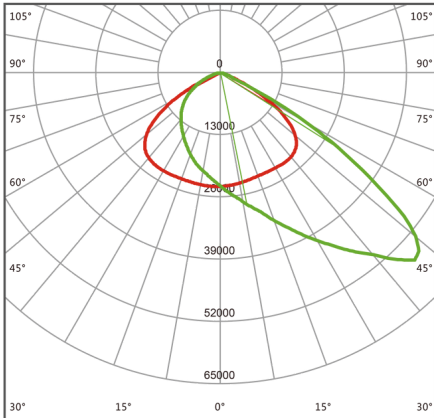


F01606

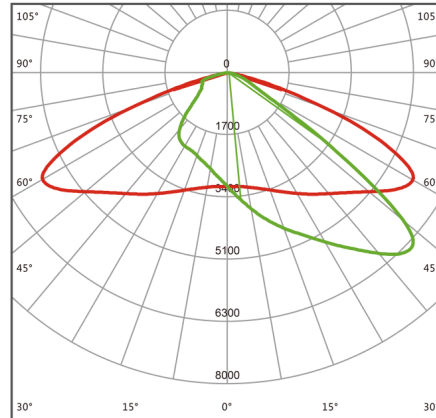


SlimBeam

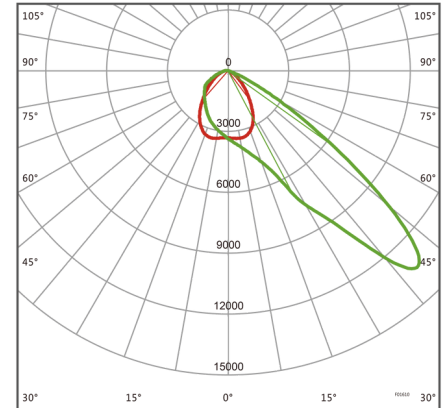
Photometry



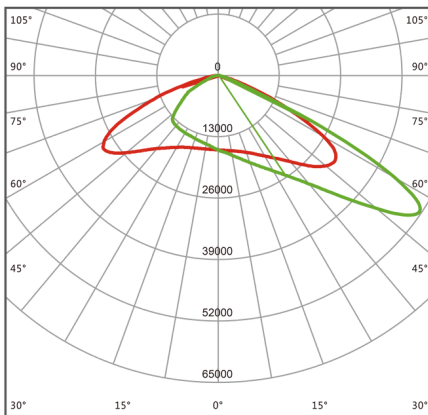
F01608



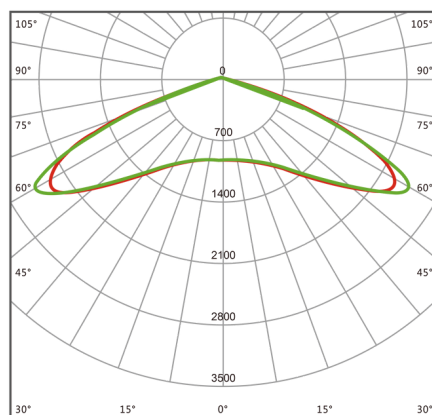
F01609



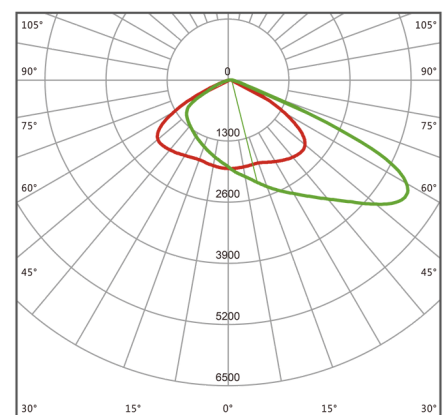
F01610



F01611



F01612

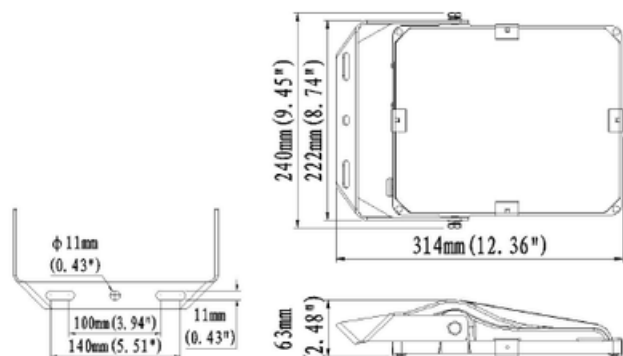


F01613

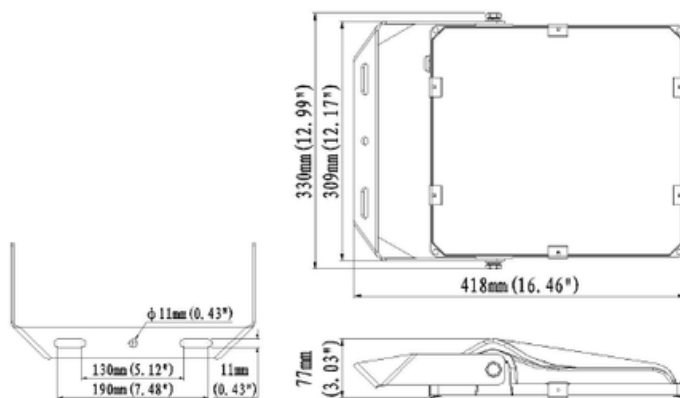


SlimBeam

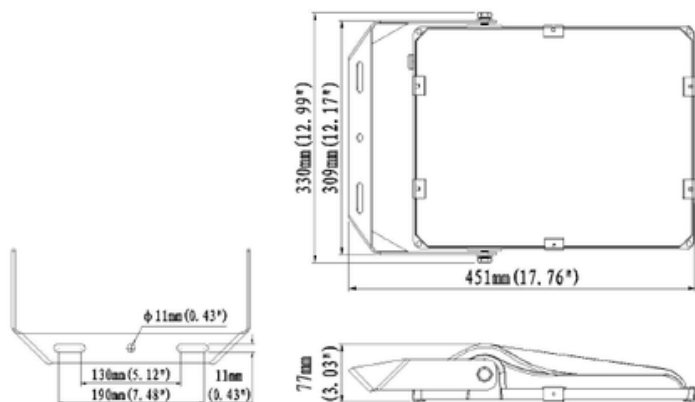
Dimensions



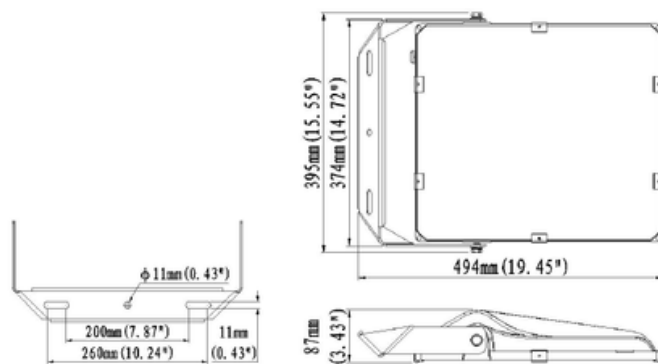
50W



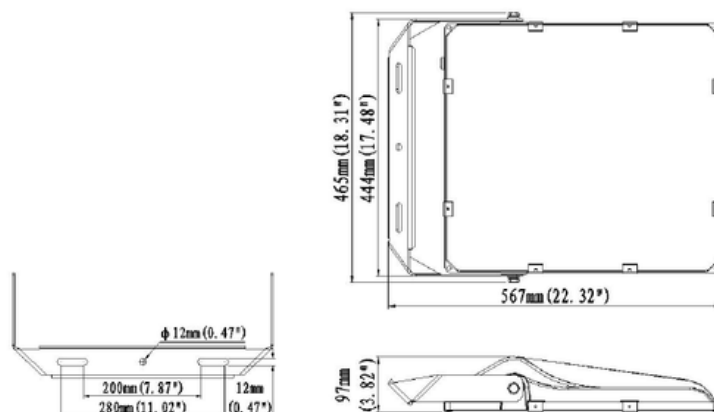
100W



150W



200W



300W



SlimBeam

Ordering Table

Example: FLSB50-5K-801-F08-02

Model	Power /Lumen	Size	CCT	Beam Angle	Accessories
FLSB50	50W/7000lm	12.36”X9.45”x2.5”	5000K:5K 4000K:4K	F00801:801	F08-02 F08-03 F15-06 F15-07a F15-07b F08-05
FLSB100	100W/14000lm	16.46”X13”x3.03”		F01601 :01	
FLSB150	150W/21000lm	17.76”X13”X3.03”		F01602 :02	
FLSB200	200W/28000lm	19.45”X15.55”X3.43”		F01603 :03	
FLSB300	300W/42000lm	22.32”X18.31”X3.32”		F01604 :04	
				F01605 :05	
				F01606 :06	
				F01608 :08	
				F01609 :09	
				F01610 :10	
				F01611 :11	
				F01612 :12	
				F01613 :13	

Accessories



Pole mounting adaptor

Q235 steel, cold galvanized, e-coating with powder coating

Code: BC-F08-02(dia.42mm)

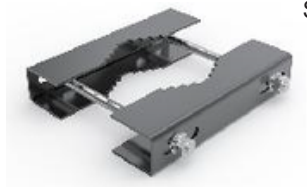
Code: BC-F08-03(dia.76mm)



Pole mounting adaptor

Aluminium materials with powder coating,dia.60mm.

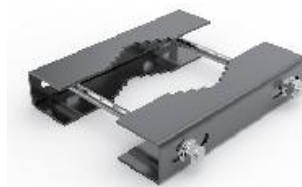
Code: BC-F15-06



Clamp mount bracket

SPCC materials, for dia. 40mm-100mm pole

Code: BC-F15-07a



Clamp mount bracket

SPCC materials, for dia. 40mm -150mm pole.

Code: BC-F15-07b



Outrigger mounting bracket

SPCC materials, for 50W only.

Code: BC-F08-05