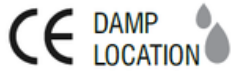




VX Gimbal 3.5"



IC
RATED

SSS
AIRTIGHT

DIMMABLE



Description:

The VX Series offers a 3.5" cut-out regressed gimbal lens design with 9W and 12W options, available in round or square trims and single, double, or triple head configurations. Featuring 5-CCT selectable settings (2700K–5000K) and an optional warm-dim function (1800K–3000K), it delivers flexible lighting with a clean, modern look. IC rated and suitable for both renovations and new construction, it's an ideal choice for residential and commercial applications

Model: VX

Optical:

CCT:	2700K-6000K, 3CCT, 5CCT, Warm Dim
Lumen out put:	Up to 1020lm
Lumen Efficacy:	85lm/w @ 4000K
CRI:	90Ra

Electrical:

Rated Power:	9W, 12W
Input voltage:	120Vac/120-277Vac/100-347Vac, 50/60Hz
Beam angle:	15° / 24° / 36°

Life:

Lifespan:	50,000 Hrs
Warranty:	2 Years

General:

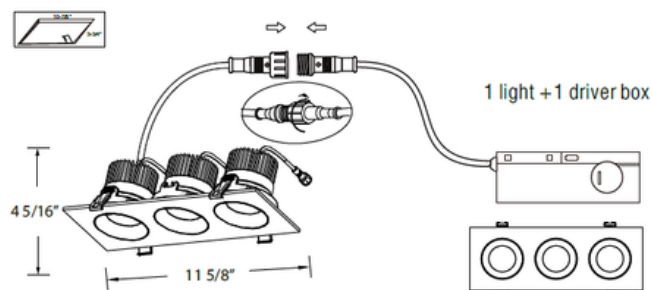
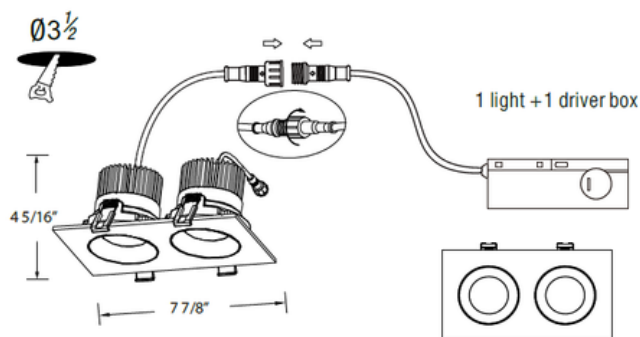
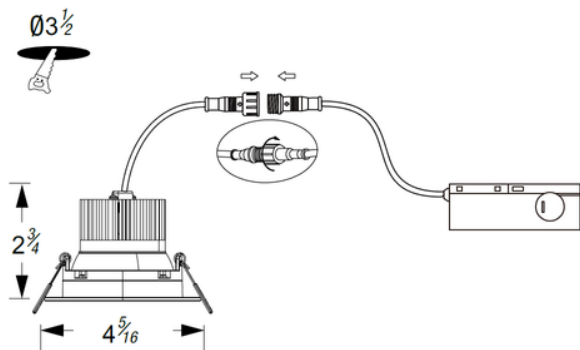
Dimmable Solution:	Triac/ELV/0-10V/Dali Dim
IP:	IP44
Trim & Ref:	Flat Trim with deep regress reflector
Material:	Die-casting Proceed ADC12
Certification:	cETLus



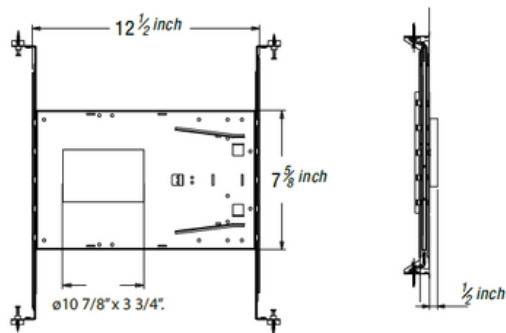
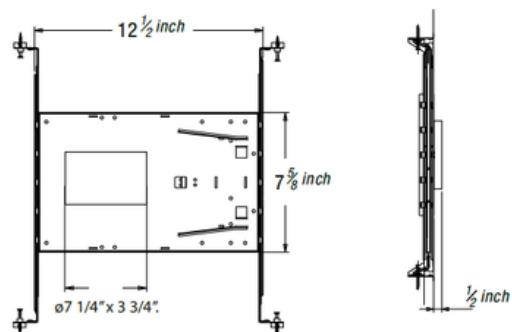
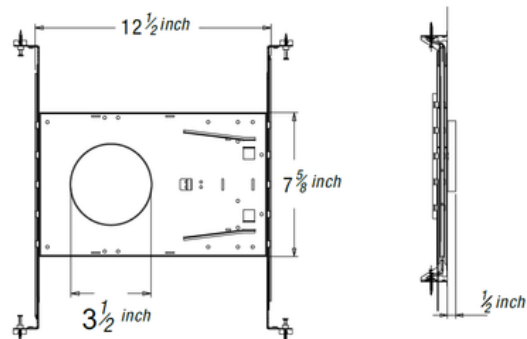


VX Gimbal 3.5"

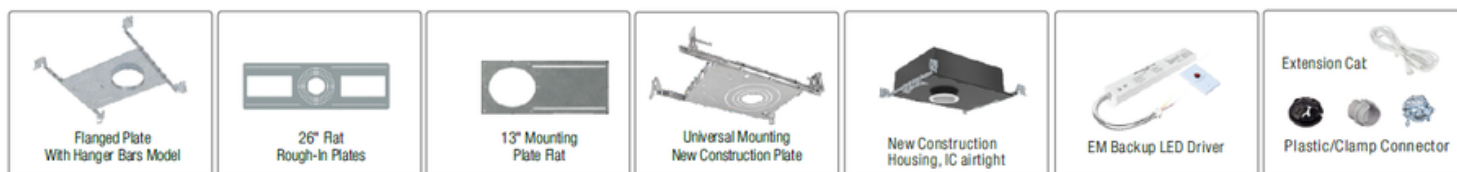
Dimensions (unit: inch):



New construction Plates:



Accessories:





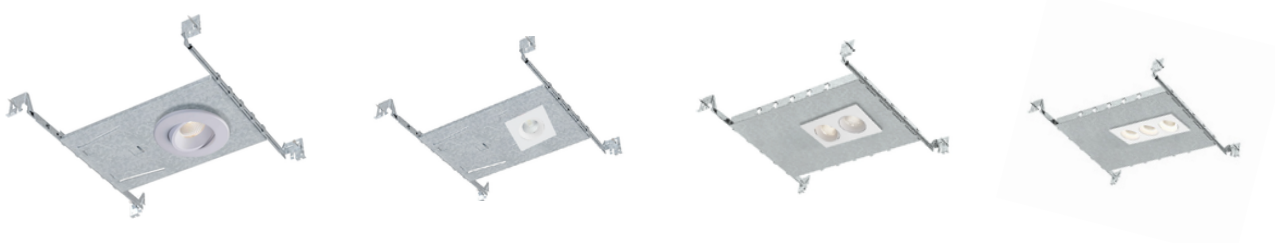
VX Gimbal 3.5"

Installations :

Remodel



New Construction



Trim Finish :



Ordering Guide :

Example : VX-R-RM-12-8-05-M-UNV-010-WH

Model	Mounting	Power	CRI	CCT ●	Beam Angle	Voltage	Dimming	Option	Finish
VX-R VX-S VX-II VX-III	RM:Remodel NW:New construction	09:9W/ea 12:12W/ea	8:80Ra+ 9:90Ra+	05:5C W:Dim to warm	N:Narrow (15°) S:Spot(24°) M: Medium (36°)	Blank:120VAC UNV:100-277VAC 347:100-347VAC	Blank:ON/Off T:Triac 010:0-10V	EM:Emergency Battery	WH:White BK:Black

● 5CCT:2700K/3000K/3500K/4000K/5000K
① Dim to Warm :3000K-1800K



VX Gimbal 3.5"

Product Features and specifications :

construction

- High-precision casting aluminum housing, cold forging heatsink technology.

Optics

- Precision-crafted optical design ensures consistent luminance through a PMMA lens which distributes light evenly and smoothly for general lighting applications

LED CHARACTERISTICS

- Advanced COB LED illumination technology
- Color Temperature: Available in dedicated single color at range of 2700K,3000K,3500K,4000K,5000K or 5CCT in One, Warm dim at 1800K-3000K or Tunable white at 2700K-6500K
- Color Index rate: 90 CRI+
- Color accuracy within 3 SDCM at the CCT endpoints, provide color accuracy and uniformity
- Expected Life: L90 at 50,000 hours projected in accordance with TM-21

LED Dimming Driver:

- 120-volt driver compatible with incandescent, magnetic low voltage and ELV dimming.
- The universal 100V-277V/347V driver with 0-10V dimming.
- Conforms to CSA C22.2 No. 250.0 & UL1598 standards. Phase dimming, Forward 1% & Reversed 5%

Mounting

- Strong snap-in mounting springs, for the use without junction box or recessed can,
- quick & easy installation for new constructions/Remodel applications.
Recessed, No Housing required

Electrical Power Connections

- 4-hole quick connectors or Wire nuts provided for mains connections

Compliance

- cETLus certified for US and Canada
- Suitable for Damp locations
- Contains no mercury or lead and RoHS compliant
- IC rated, suitable for direct contact with insulation

