



LumaFlex Gimbal 90



Description:

This low profile Gimbal Downlight is a 9 watt 4" lighting fixture for recess retrofit application. It is a high-performance, easy to install residential grade downlight solution that offers good light output, energy efficiency and streamlined design, Suitable for damp locations. ETL Approved, IC Rated and Air Tight 3 CCT tunable by DIP Switch and Wall Switch control.

Model: DNLG09C4205CWHL P

Optical:

CCT:	5CCT Tunable
Lumen out put:	750LM
Lumen Efficacy:	80LM/W
LED Type:	COB
CRI:	≥80

Electrical:

Rated Power:	9W
Input voltage:	120V / AC / 60Hz
Beam angle:	60°

Life:

Lumen maintenance:	50,000 Hours
Warranty:	2 years

General:

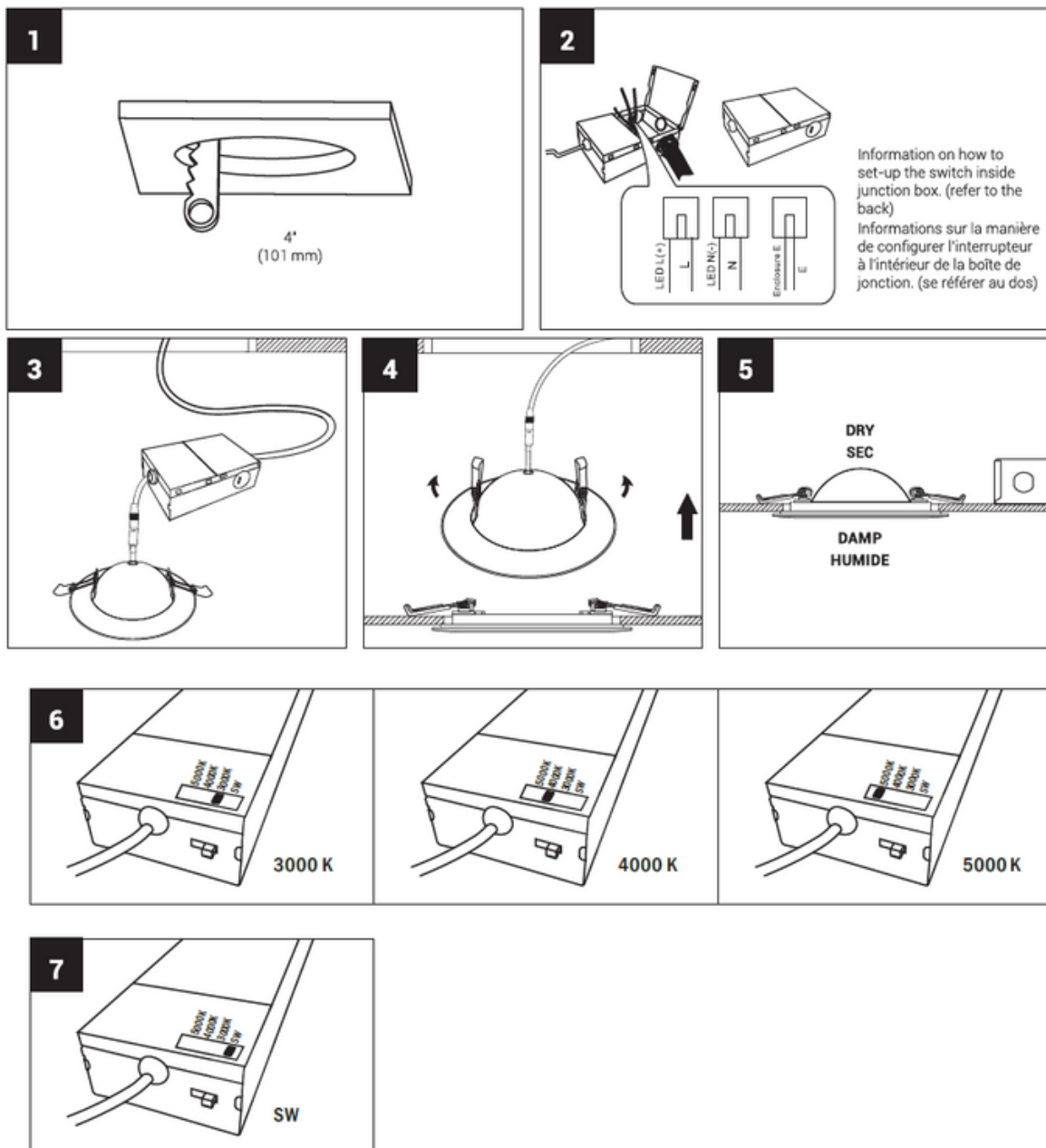
Dimmable Solution:	5%-100% dimming capability
IP:	IP44
Operating temperature:	-20°C~+40°C(-4°F~10°F)
Finish color Availability:	White
Certification:	ETL, Energy Star





LumaFlex Gimbal 90

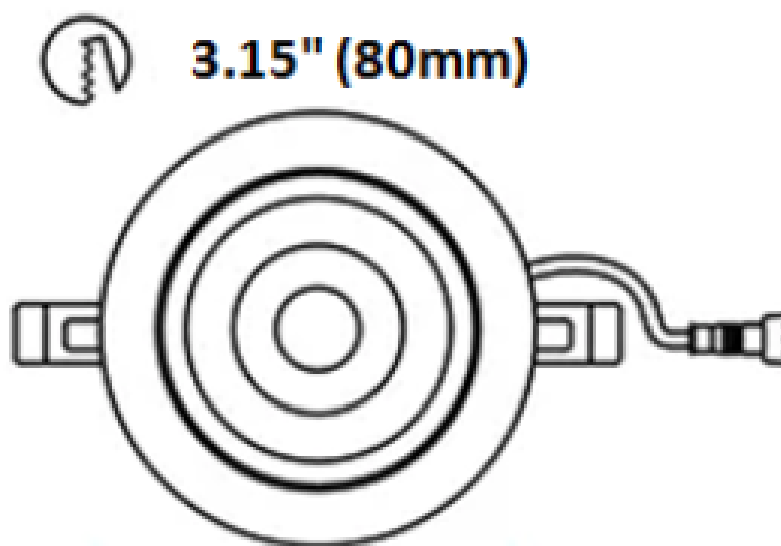
INSTALLATION





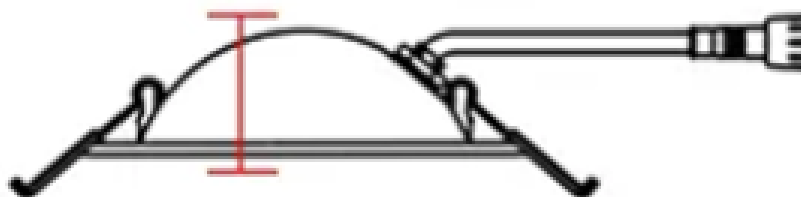
LumaFlex Gimbal 90

DRAWING



3.15" (80mm)

OD: 4.72" (120mm)



H: 0.98" (20mm)